



**inscape** smart  
workspaces

● ● ● ● ●  
SOUTHWEST**SOLUTIONS**GROUP

[SouthwestSolutions.com](http://SouthwestSolutions.com) | 800-803-1083 | [info@southwestsolutions.com](mailto:info@southwestsolutions.com)

# Create spaces that make life at work better.

## Smart Workspaces

### Delight Users

Thoughtful details keep users happy and productive.

### Empower Technology

Convenient, flexible access to technology and power makes it easy to share information.

### Foster Agility

Smart products let people easily customize and change their space.

### Design for Sustainability

Good choices matter – from beginning to end, and over again.



Unseen but ubiquitous it allows light to pass through, and is indispensable for everyday life. The system for walls to model and organize spaces without creating new obstacles, but rather playing off of transparency, brightness and the free flow of thought and activity.

*Atmosphere  
of freedom.*



**SOUTHWESTSOLUTIONSGROUP**

[SouthwestSolutions.com](http://SouthwestSolutions.com) | 800-803-1083 | [info@southwestsolutions.com](mailto:info@southwestsolutions.com)



Structures  
made of light and  
transparency.

—  
Inspired by a refined minimalism, in which materials and technologies become at the same time, a functional and aesthetic element. The structure, in aluminum extrusion, is available in natural anodized, matte black, and white finish. Three tones of color that make for perfect integration into any environment, underscoring the contours of a wall like a subtle line.



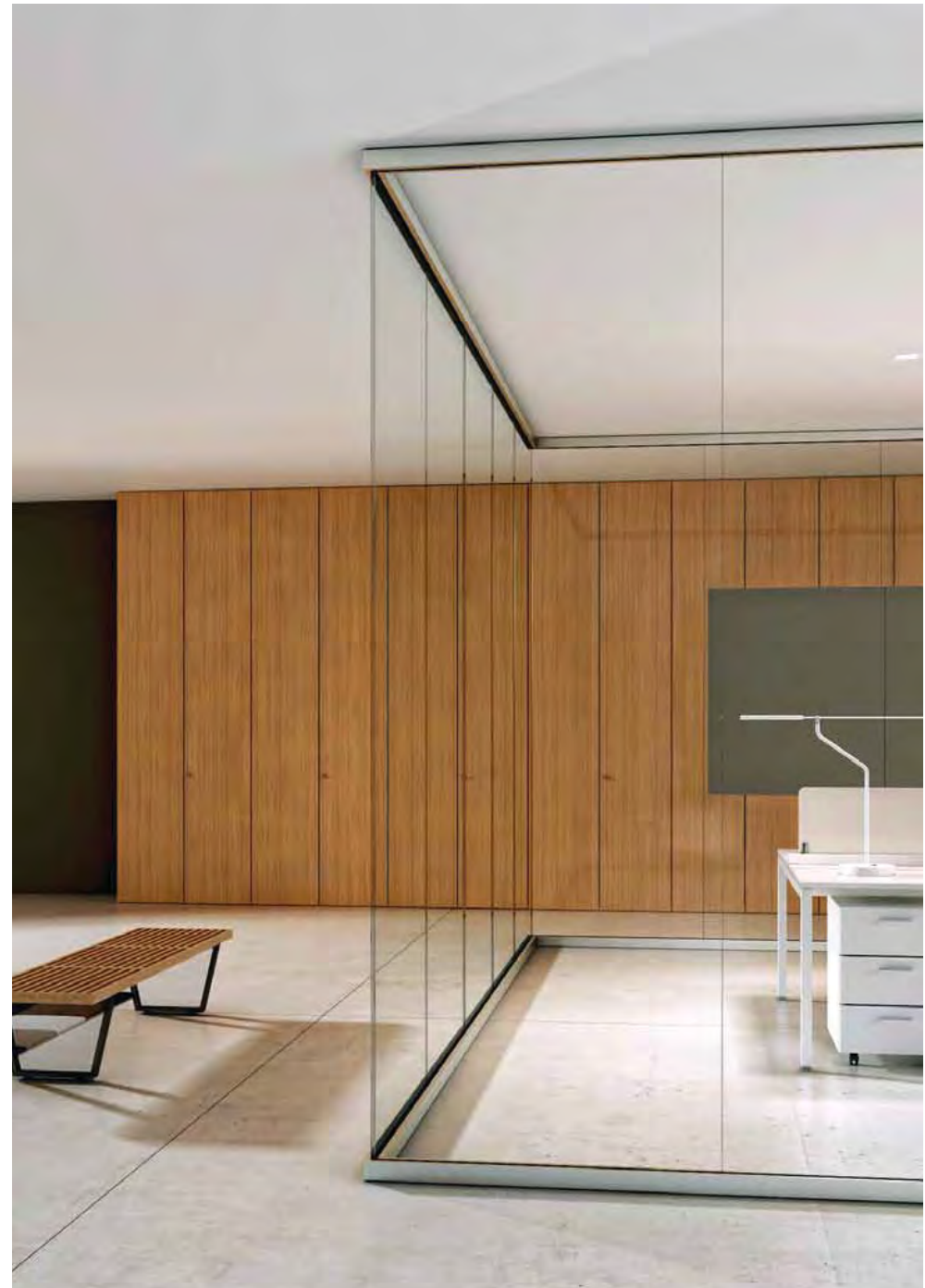
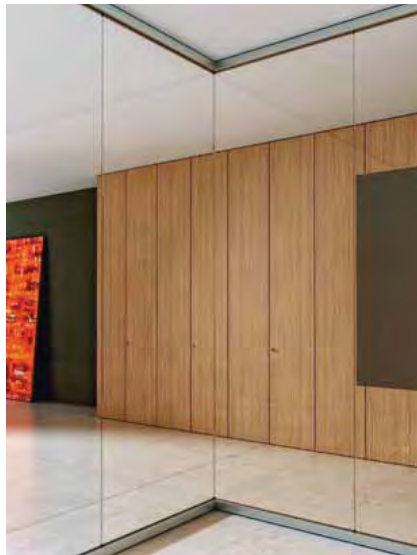


● ● ● ● ●  
SOUTHWEST**SOLUTIONS**GROUP

[SouthwestSolutions.com](https://SouthwestSolutions.com) | 800-803-1083 | [info@southwestsolutions.com](mailto:info@southwestsolutions.com)

—  
We offer a choice of laminated and tempered glass, connected vertically with polycarbonate or aluminum profiles that guarantee a perfect union, with either a total transparency or an aluminum touch.

Glass as an architectural component.





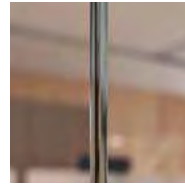
The glass panels can be personalized with large lined patterns or in strips of sandblasted panel, making the environment distinct and creating a heightened sense of privacy, wonderfully suited for a conference room for example. The system, furthermore, includes (for solid panels), different finishes on two sides, to give another layer, and another "rhythm" to each composition.

*Bright  
ideas  
that take  
shape.*

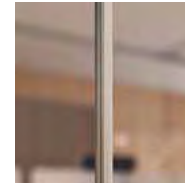




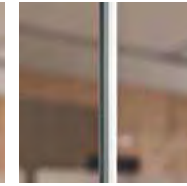
*Design  
without limits.*



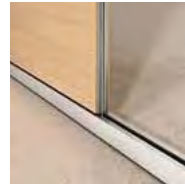
Transparent polycarbonate profile



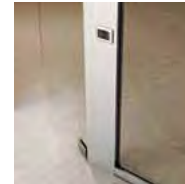
Satined polycarbonate profile



Aluminium profile



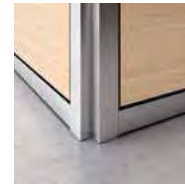
Solid/glass partition



Technical module



3-way connection



Variable angle



90° angle

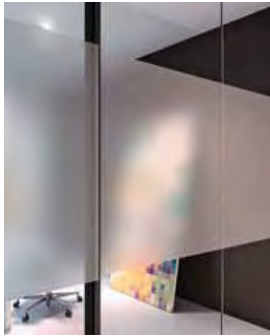
—  
A complete system to define any environment, without any limits of space or of composition, choosing amongst the many elements and finishings, with a focus, always, on quality and livability.





—  
The use of wide glass surfaces is a distinctive element in contemporary architecture, which responds to a further criterion of eco-sustainability. To use solar energy most efficiently means, in fact, saving energy and reducing the environmental impact.

The nature  
of contemporary  
office.



The glass elements are available in Europe Grey and Bronze finishes, two shades that add a warm and mellow note to the space, in sync with the natural finishes of the solid panels and the storage walls.

*The discreet  
charm of  
transparency.*



SOUTHWEST**SOLUTIONS**GROUP

[SouthwestSolutions.com](https://SouthwestSolutions.com) | 800-803-1083 | [info@southwestsolutions.com](mailto:info@southwestsolutions.com)



It is possible to personalize the glass pieces with satinated panels, or by applying transparent or matte films, to create a multitude of pairings with the solid panels and the horizontal/vertical profiles.



Visible  
quality.



[SouthwestSolutions.com](https://SouthwestSolutions.com) | 800-803-1083 | [info@southwestsolutions.com](mailto:info@southwestsolutions.com)



[SouthwestSolutions.com](https://SouthwestSolutions.com) | 800-803-1083 | [info@southwestsolutions.com](mailto:info@southwestsolutions.com)

Even color can become part of the expressive language, creating surfaces that seem to free themselves in flight, moving space and characterizing the different operative areas, whether in waiting or conference rooms.

*All colors  
of life.*



—  
Sliding doors with buffer-cushion or 180°-opening panels, following the flow of operations within an office, ensuring comfort and security. The passage of wires happens within technical modules, to create an easy connection with all lighting and work technologies.

Space  
on the move.



● ● ● ● ●  
SOUTHWEST**SOLUTIONS**GROUP

[SouthwestSolutions.com](http://SouthwestSolutions.com) | 800-803-1083 | [info@southwestsolutions.com](mailto:info@southwestsolutions.com)

A perfect co-planarity of the elements, maximum insulation and acoustic capacity, panels in class E1 wood paneling, push-pull lever-style handles: the quality must be seen in each single component, just as in all of the office solutions.



Solid swing door



Glass swing door



Glass sliding door



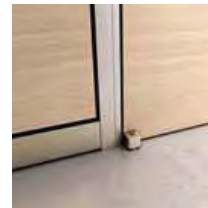
Glass swing door



Glass sliding door



Door lock



Door hinge

