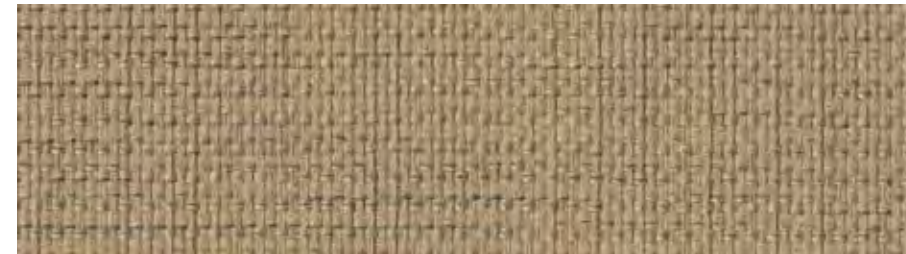


Intuition 4856

MULTI-PURPOSE | UPHOLSTERY
PANEL | ACOUSTIC

MULTI-PURPOSE | UPHOLSTERY
PANEL | ACOUSTIC

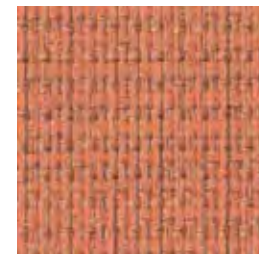
Intuition 4856



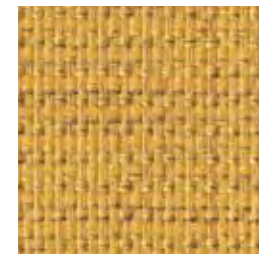
Sand
1713



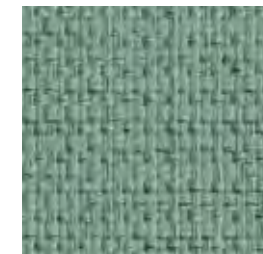
Bisque
1711



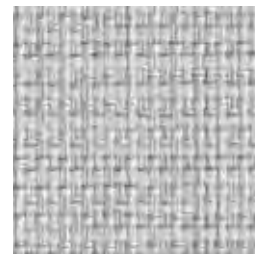
Coral
1714



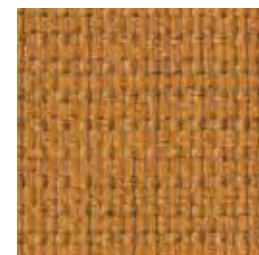
Honey
1716



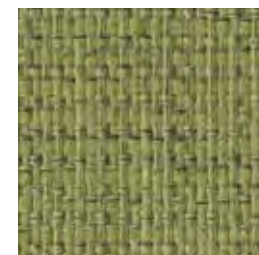
Viridian
1723



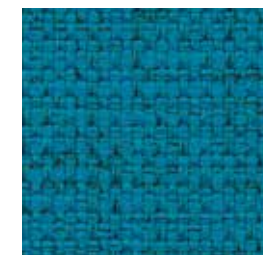
Platinum
1717



Ochre
1718



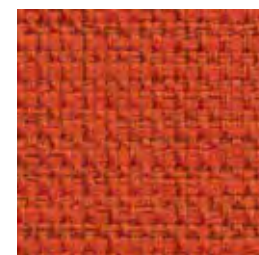
Sage
1721



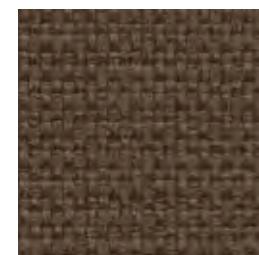
Peacock
1722



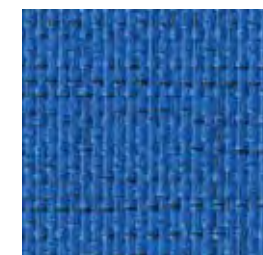
Slate
1719



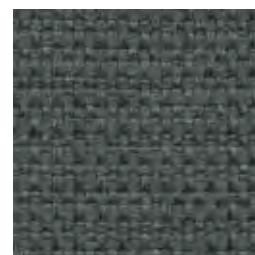
Scarlet
1720



Hickory
1715



Admiral
1724



Charcoal
1712

Specifications

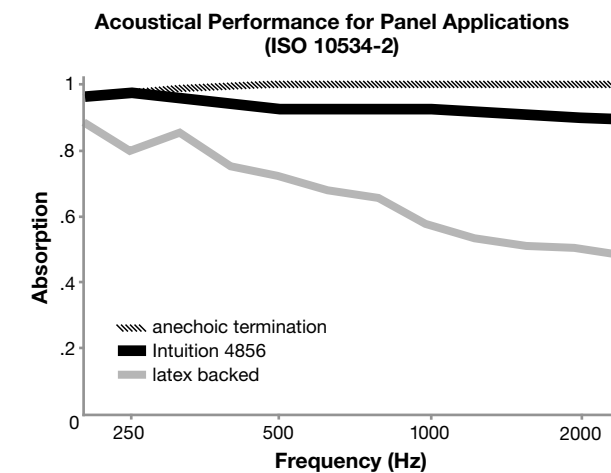
Content	55% post-consumer recycled polyester 34% pre-consumer recycled polyester 11% polyester
Weight	11.2 ± 1.0 oz./lin. yd.
Width	54" min. useable
Repeat	none
Backing	acrylic backcoating
Treatment	stain repellent

Cleaning Code

Standard Care Label W-S. Clean with water based cleaning agents, foam or pure, water free solvents. Vacuuming or light brushing is recommended to prevent dust and soil buildup. May also be disinfected with hydrogen peroxide, alcohol, and quaternary ammonium (quat) based cleaners.

Acoustical Performance

The plot below summarizes impedance tube measurements of absorption of an anechoic termination and various fabrics in front of the anechoic termination.



NRC of anechoic termination	1.00
NRC of fabric in front of anechoic termination	.95

Performance

- Colorfastness to Light (AATCC 16.3 Option 3)
Grade 4 min. at 40 hours
- Colorfastness to Crocking (AATCC 8)
Grade 4 min. dry & Grade 3 min. wet
- Breaking Strength (ASTM D5034)
210 lbf warp and 200 lbf fill
- Seam Slippage (ASTM D4034)
30 lbf warp and 45 lbf fill
- Pilling Resistance (ASTM D3511)
Class 4 min.
- Flammability
**CA Technical Bulletin 117-2013 Section 1
ASTM E84 Class I or A**
- Abrasion (ASTM D4157)
100,000 double rubs cotton duck

Sustainability



Miscellaneous

Proudly woven in North America supporting our local communities.
Application testing of this product is recommended.
Colors may vary between dye lots. This is a directional fabric.

Visit guilfordofmaine.com for samples.

This pattern is included in the underwriters laboratory panel fabric recognition program. Additional testing of this U.L. recognized component fabric is not required on approved panels from participating manufacturers.

*Certification Marks owned by the Association for Contract Textiles, Inc.

