

SHUTTLE STORAGE AUTOMATION PROMOTES PRODUCTIVITY

Productivity is a crucial factor in determining the performance of your business. Enhancing the productivity of your business results in:



Reducing
operating costs



Improving
customer acquisitions



Creating industry
leadership



Increasing
profitability

Inefficiencies like poor flow of materials, poor space utilization, disorganized storage, and manual inventory management can quickly add up—and end up costing you customers and thousands of dollars in lost profit.



JUST THE FACTS - BENEFITS OF SHUTTLE STORAGE AUTOMATION

Picking Efficiency: Cuts pick times by **1/3** or more

Picking Accuracy: **99.9%** picking accuracy

Inventory Control: Eliminates stock-outs and overstocking

Space Savings: Uses up to **80%** less floor space

Safety & Ergonomics: Eliminates bending, climbing and lifting that causes worker's compensation claims

Security: Totally secured system eliminates pilferage and lost inventory

● ● ● ● ●
SOUTHWEST**SOLUTIONS**GROUP

SouthwestSolutions.com | 800-803-1083 | info@southwestsolutions.com

A CLOSER LOOK SHUTTLE STORAGE AUTOMATION VS. TRADITIONAL SHELVING

PICKING EFFICIENCY

Vertical storage Shuttles eliminate wasted walk and search time by bringing requested items directly to the operator with push button technology.

With full tray extraction, the tray is automatically presented for easy loading, unloading, and handling of heavy and bulky goods,



Employees are able to pick the right part in a fraction of the time as with manual picking with the help of light-directed picking, as well as automated batch picking and kitting.

Dual tray delivery ensures that while items are stored and removed from the first tray, the next tray is already being retrieved and is kept in position to decrease wait time between picks even further.

PICKING ACCURACY

The Shuttle can increase accuracy up to 99.9% by bringing the specified bins to the operator using infrared light-directed technology that shows exactly which part to pick from shelves.

This allows operators to spend less time on picking and reduces the risk of operators picking the wrong part.



More accurate picking means that fewer people are required for picking and putting operations, allowing you to reallocate them to other revenue-producing activities.

Accurate, quick, and efficient order fulfillment increases customer trust, satisfaction, and retention.

SAFETY/ERGONOMICS

Workers frequently reach, bend, lift, twist, or use other unnatural body motions that can cause injury when retrieving items from shelves

In a Shuttle, inventory is stored vertically and automatically brought down to an ergonomically placed, waist-high work counter so employees can easily see and access everything on the shelf



Workers risk falling off ladders when climbing to reach parts and when walking through warehouses throughout the day searching for parts

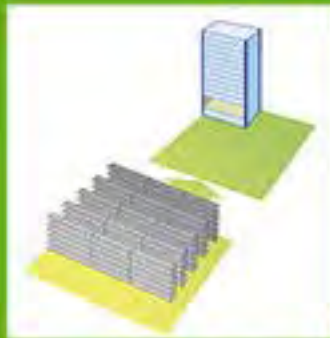
Operators don't need to walk anywhere to retrieve parts, since they're brought directly to the point of use.

SPACE EFFICIENCY

Shelves need enough space for aisles for employees to walk through, require air space above bins for reaching, and are difficult to store parts efficiently in.

In a Shuttle, inventory is stored in one centralized location to consolidate storage and save space.

Inventory height is scanned and automatically stored in the least amount of space required with Integrated CubeStar® technology.



Reworking storage on shelves is also difficult when new inventory comes in. Small, medium, and large parts are often stored in different areas, requiring extra walking and searching.

Its vertical design converts overhead wasted air space into dynamic storage space.

Vertical storage space savings combined with efficient automatic storage of inventory can provide 72% more storage capacity in 80% less space than traditional static storage.

SECURITY

It is difficult to track items with manual inventory and a lack of accountability makes it easy for items to be pilfered or go missing.

Automated inventory tracking technology in a Shuttle allows you to view who accessed which items, and controlled access to specific trays ensures that only authorized personnel are able to access them.

Automatic shutter doors protect the operator and stored goods from being injured or damaged by moving parts.



Items stored on shelves also quickly become dusty, which can damage sensitive parts, lead employees to spend extra time cleaning them, or lead to customers receiving dirty, dusty items with their order.

A self-monitoring safety light barrier monitors the unit access area.

The enclosed design of the Shuttle protects inventory from being damaged or degraded by dust or other environmental factors such as humidity and moisture.

INVENTORY CONTROL

With shelving, inventory is done manually, which is prone to errors.

Automated inventory management continuously monitors stock levels, provides real-time inventory data, and sends alerts or can even automatically order new parts to avoid overstocks and stock-outs.



It's difficult to determine when an item will be out of stock, which leads to companies rushing to obtain inventory after a stock-out.

Increased inventory visibility makes it easy to quickly view what inventory is in stock and what's running low at any time.

PARTS SEGREGATION

Small, medium, and large parts are often stored in separate areas on shelving, which requires aisle space and reaching space above bins that quickly adds up.

Inventory in a Shuttle is stored at the point of use and separated by space-saving bins that make it easy for the operator to identify and access parts.

An internal weight management system monitors the trays to prevent overloading.



Since inventory is stored within the Shuttle, aisle space and reaching space isn't needed.

Cubestor technology utilizes every inch of the Shuttle for storage.

Multiple capacity trays can be used within one Shuttle so small, medium, and large parts can all be stored in one convenient area.

WHAT SIZES DO THE SHUTTLES COME IN?

Each KardexRemstar® Shuttle XP can be tailored to optimize your facility's cubic space.



The storage trays can hold a maximum load up to 2,000 lbs.

TRAY DIMENSIONS:

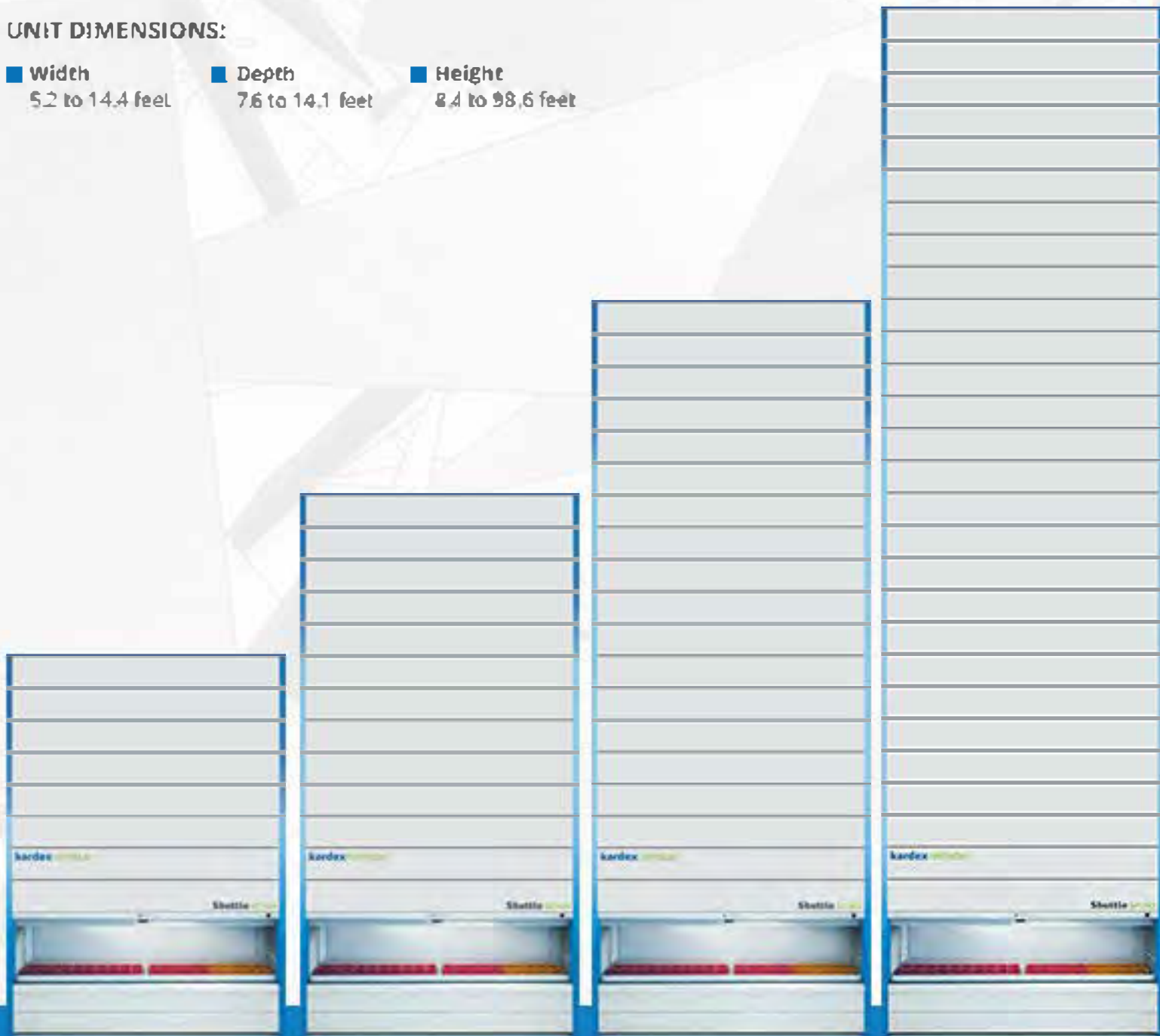
- Width
4.1 to 13.3 feet
- Depth
2 to 2.8 feet
- Adjustment heights
1 inch
- Tray height
3 inch
- Maximum storage Height on a tray
~ 30 inches

SOUTHWEST SOLUTIONS GROUP

SouthwestSolutions.com | 800-803-1083 | info@southwestsolutions.com

UNIT DIMENSIONS:

- **Width**
5.2 to 14.4 feet
- **Depth**
7.6 to 14.1 feet
- **Height**
8.4 to 98.6 feet



Heights from 8.4 to 98.6 feet



INTEGRATED INVENTORY MANAGEMENT SOFTWARE

The ShuttleSes can be installed as a stand alone solution with integrated batch picking. For even more inventory control and visibility the ShuttleSes can also integrate with your existing ERP or WMS. KardexRemstar offers wide portfolio of software packages:

1

Smartpick 5200

Designed for inventory management
in the electronics industry

2

Smartpick 6000

Supports efficient order picking
with high throughput

3

Cleverstore 1000

Designed for efficient storage and
retrieval of materials

● ● ● ● ●
SOUTHWEST**SOLUTIONS**GROUP

Enhance Your Accuracy

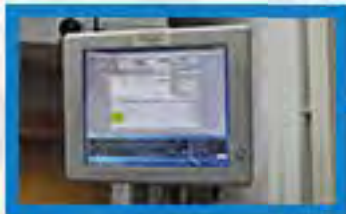
From the standard validation via barcode, handheld RFID, or weight control to a wide range of optical user guidance such as Pick-to-Light, Put-to-Light, or LED Pointer, Power Pick Global Inventory Management Software assists the user to work with greater accuracy.



Achieve Greater Efficiency

Integrating Power Pick Global into your processes allows batch order picking. Picking multiple orders at one time increases throughput significantly.

When Security Matters Through Power Pick Global, user rights and group rights can be controlled and managed by supervisors. Each transaction is monitored and tracked to provide real time inventory data.



Wide Range of Software Solutions

From an easy "Plug and Play" and middleware to customized solutions, all Power Pick Global software solutions are based on the latest Windows @ technology, which can interface with the majority of tier one and tier two WMS and ERP providers.

Modularity

From the smallest store to a complex distribution centre, Power Pick Global can be perfectly tailored to your requirements - with future security included in the package. This is because we carry out continuous development and expansion of the Fast PickS inventory management solutions.



UNIQUE SHUTTLE APPLICATIONS

KardexRemstar Shuttle XP offers even greater flexibility thanks to various options available. It can be resized, moved, and altered to meet changing business and facility requirements. The system can be installed almost anywhere and can connect through several floors or work areas for multi-level access.



Installation Outside The Building

To increase the existing facility capacity, a shuttle can be installed outside the building and walled in with pass-through access.



Multiple access ports

Access ports can be installed vertically through several floors or on both sides of the unit.



Manual / Automatic Tray Extraction

Using full tray extraction, the tray is automatically pushed out onto an extraction table mounted to the front of the Shuttle, allowing easy loading, unloading, and handling of heavy and bulky goods.



Dual Tray Access

A dual tray delivery option makes it possible to use two work levels in the access opening. While items are stored or removed from the first tray, the next tray is being retrieved and kept in a waiting position, decreasing wait time even further.



Unique applications

The Shuttles can be adapted with refrigeration, Halon, and positive or negative air flow.