



fume hoods



cabinets

shelving systems



work surfaces

fixtures



Southwest Solutions Group offers an excellent selection of stainless steel and painted steel cabinets. We also have a comprehensive offering of chemical fume hoods, flexible lab furniture, healthcare furnishings and work surfaces. We are a full service supplier for all your laboratory needs.

The Southwest Solutions Group team includes:

- **Furniture Specialists** to coordinate the most logical and cost effective layout to your lab.
- **Project Estimators** to provide a comprehensive estimate of your needs and project costs.
- **Design Specialists** to create CAD plan and elevation drawings maximizing available space and complying with established safety standards.
- **Project Managers** to oversee your project from start to finish.
- **Factory Trained Installers** to deliver a complete trouble free finish to your project.



Contents:

Fume Hoods

| | |
|-------------------------|----|
| Isolator ³ | 3 |
| Work Surfaces | 4 |
| Airflow Monitor/Alarm | 4 |
| Remote control fixtures | 4 |
| Cup sink | 24 |

Base Cabinets

| | |
|-----------------|---|
| Sitting Height | 5 |
| Standing Height | 5 |
| Sink Cabinets | 6 |
| Acid Storage | 7 |
| Solvent Storage | 7 |

Table Rails and Frames

| | |
|---------------------|---|
| Aprons with drawers | 7 |
| Apron rails | 7 |
| Panel end supports | 8 |

| | |
|--------|---|
| Tables | 8 |
|--------|---|

| | |
|------------------------|---|
| Wall and Tall Cabinets | 9 |
|------------------------|---|

Casework Trim and Accessories

| | |
|-----------------------|----|
| Knee space panels for | |
| Aprons with drawers | 10 |
| Apron Rails | 11 |
| Base cabinet fillers | 11 |
| Pipe enclosures | 12 |

Lab Shelving Systems

| | |
|-----------------------------------|----|
| Peninsula/Island system schematic | 14 |
| Shelving Brackets | 16 |
| Wall Standards | |
| Peninsula/Island stanchions | 15 |
| Cross members and hardware | 17 |
| Phenolic shelving | 18 |
| Front/Rear retaining lips | 18 |

| | |
|---------------|----|
| Work Surfaces | 19 |
|---------------|----|

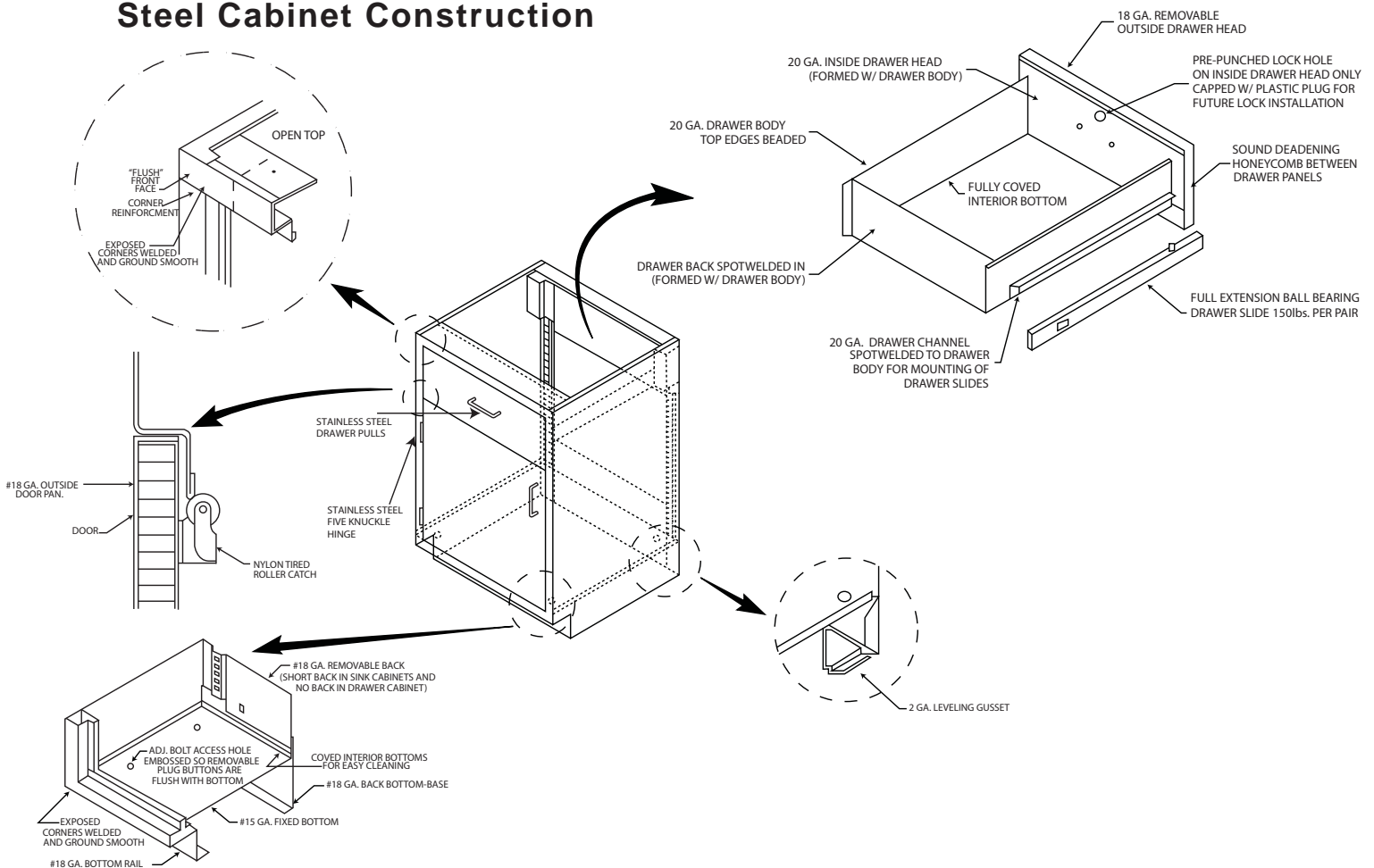
Accessories

| | |
|------------------------------|----|
| Lab water faucets | 22 |
| Electrical pedestals | 22 |
| Gas fittings | 23 |
| Eyewashes and safety showers | 23 |
| Sinks and Pegboards | 24 |

Cabinet Construction Detail

Our cabinets are made from heavy gauge steel. They are fully welded and constructed for decades of performance. Base units have a load capacity of 500 lbs per linear foot. Our environmentally friendly powder coat finish helps to create a comfortable and practical lab environment. All of our cabinets come in an off white color of Pearl White. We bring quality, durability and beauty to your laboratory.

Steel Cabinet Construction



Cabinet Bottom & Base

- Completely enclosed toe space promotes lab cleanliness
- Lower corner reinforcing gusset with 2-1/2" height leveling bolt (full four corners)

Steel Door

- Two piece door construction
- Structurally sound deadened for added strength and quiet operation
- Five knuckle institutional type stainless steel hinge
- Positive plunger catch
- Rubber door bumpers

Steel Drawer

- One piece drawer body with radiused bottom for easy cleaning
- Full extension ball bearing drawer suspension provides 150 lbs load capacity
- Drawer head is sound deadened for quiet operation

Isolator³ High Performance Fume Hoods

With Vertical Rising Sash



For nearly 70 years, we have been developing innovative and purpose driven products for the research and healthcare industries. Our highly experienced team of engineers and designers are proud to introduce our latest effort: **Isolator³**.

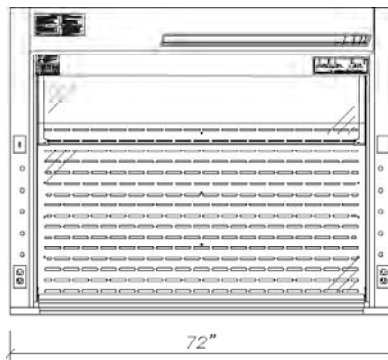
Isolator³ is the latest generation of energy saving high performance fume hoods, built upon extensive R&D. Utilizing computational fluid dynamics, **we were** able to develop a safe and superior operating environment without the need for additional components to add or inject air into the hood chamber. By controlling baffle pressurization, Isolator³ achieves the proper capture and containment at a 60 FPM face velocity. Additionally, we do it with a sash opening of 24".

- 24" deep clear interior
- Low static rectangular exhaust duct
- Integral stainless steel 12" round duct transition
- Slotted rear baffle for even plenum balance
- Can operate at 60 fpm with sash at 24" open
- Chemically resistant white Polyglass liner
- UL1805, ANSI/ASHRAE 110-1995, UL1275
- Chain & Sprocket sash mechanism with the exclusive lifetime warranty
- Exclusive standard 43 1/2" tall full view sash area
- Tempered glass sash with full-length formed steel handle for a neat, clean appearance and streamline air passage

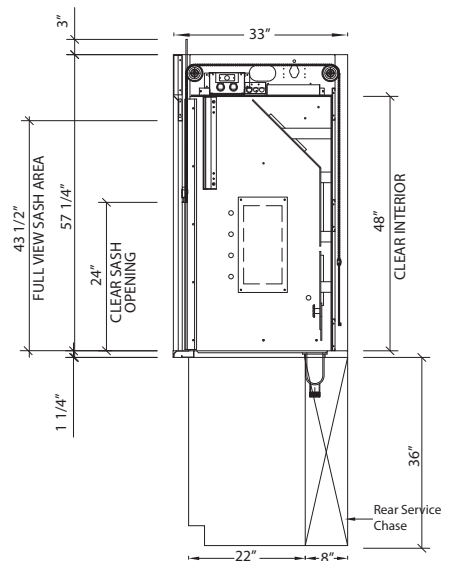
| Isolator ³ GEN5 Model Number with frameless vertical sash | Overall Hood Length | Sash Opening Area (Sq Ft) | Total CFM & Static Pressure | | | |
|--|---------------------|---------------------------|-----------------------------|-----------|-------------------------|-----------|
| | | | @60 FPM Face Velocity | S.P. Loss | @ 100 FPM Face Velocity | S.P. Loss |
| F-350-48G5 | 4'-0" (121.9cm) | 6.3 | 380 CFM | 0.04" | 630 CFM | 0.05" |
| F-350-72G5 | 6'-0" (182.9cm) | 10.3 | 620 CFM | 0.04" | 1030 CFM | 0.20" |



F-350-48G5



F-350-72G5



SECTION VIEW

Hood Features

- One pre-wired outlet on roof of hood for an optional alarm
- Two pre-wired 120V 20amp duplex receptacles
- One pre-wired 20amp light switch
- Pre-wired vapor tight T8 fluorescent light fixture
- Each hood side post and interior is punched and plugged to receive 5 service fixtures

Fume Hood Accessories

Fittings for Bench Hoods

These WaterSaver brand remote control fittings consist of a brass angle valve with a replaceable seat, an epoxy coated brass nylon color-coded panel flange with angle serrated hose connector (except LGS-3185-WV, which features a gooseneck with vacuum breaker), a remote control rod assembly with a plastic flange and a tank nipple, locknut and washer.

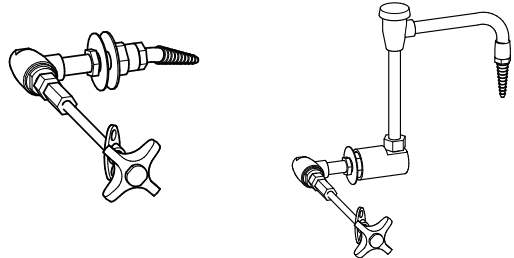
Fittings may be used on either side of the hood

| Fitting Type | Cat. No. |
|--|-------------|
| Air | LGS-3185-A |
| Gas | LGS-3185-G |
| Nitrogen | LGS-3185-N |
| Vacuum | LGS-3185-V |
| Cold Water Gooseneck with Vacuum Breaker | LGS-3185-WV |

All fittings are shipped loose and are to be installed in the field.

Service Fitting Color Codes:

| | |
|------------|------------|
| Air | Orange |
| Gas | Dark blue |
| Nitrogen | Brown |
| Vacuum | Yellow |
| Cold Water | Dark Green |



Fume Hood Worktops

These modified black epoxy resin worktops are dished to retain spills. They are available with or without a drop in cup sink hole. Cup sinks are found in the accessories section of the catalog.

| Fume Hood Width | Cat. No. w/o cup sink | Cat. No. w/ Cup Sink (Left) | Cat. No. w/ Cup Sink (Right) |
|------------------|-----------------------|-----------------------------|------------------------------|
| 4 foot (121.9cm) | WL-48B | WL-48BCSL | WL-48BCSR |
| 6 foot (182.9cm) | WL-72B | WL-72BCSL | WL-72BCSR |



TEL AFA-1000 Alarm

Each hood is pre-punched for the fast and easy installation of this alarm.

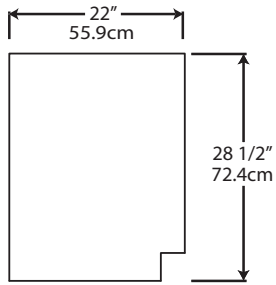
The TEL AFA-1000 provides a digital readout of the fume hood face velocity and sounds an alarm when the airflow falls below safe levels. Consisting of a thermostat sensor (mounted through the side wall of the fume hood) and a control monitor (mounted on the fascia), the unit gives both a visual and audible alarm. A glowing green light signals when conditions are safe. The control monitor also contains a test/reset button allowing the user to verify alarm readiness. The TEL AFA-1000 operates on a 9V DC circuit and comes complete with an adapter that is plugged into a prewired 120 VAC receptacle on the roof of the hood.



Catalog # A-1000

Base Cabinets

Sitting Height



Section View

- Standard without locks
- All cabinets include a cut-out for service access; if cabinet backs are exposed, a finished back is required
- Order work surfaces separately

Drawer Cabinets



- One 3 1/2" (8.9cm) high drawer
- One 7" (17.8cm) high drawer
- One 10 1/2" (26.7cm) high file drawer

| Product # | Width |
|-----------|--------------|
| P070-24 | 24" (61.0cm) |

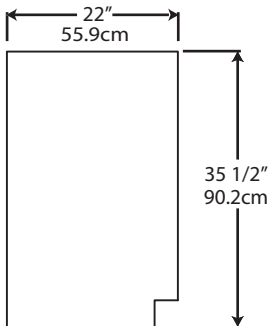
Door/Drawer Cabinets



- One 7" (17.8cm) high drawer above cupboard
- Left-hinged

| Product # | Width |
|-----------|--------------|
| P169-18 | 18" (45.7cm) |

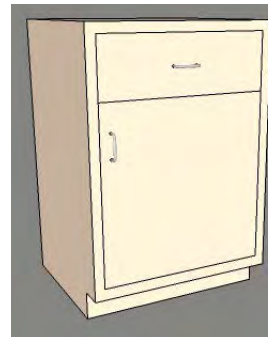
Standing Height



Section View

- Standard without locks
- Shelves are adjustable in half-inch increments
- All cabinets include a cut-out for service access; if cabinet backs are exposed, a finished back is required
- Order work surfaces separately

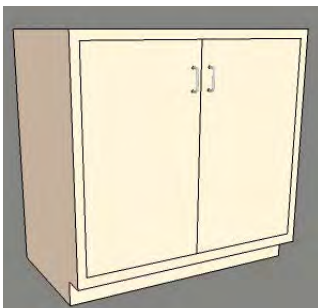
Door/Drawer Cabinets



- One 7" (17.8cm) high drawer above cupboard
- One adjustable shelf in cupboard
- Right-hinged

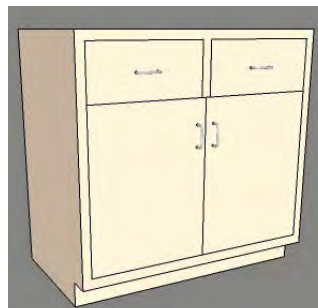
| Product # | Width |
|-----------|--------------|
| P118-18 | 18" (45.7cm) |
| P118-24 | 24" (60.9cm) |

Double Door Cabinets



- Solid hinged double doors
- One adjustable shelf

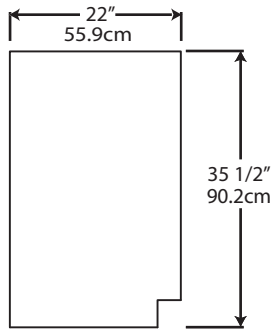
| Product # | Width |
|-----------|---------------|
| P103-30 | 30" (76.2cm) |
| P103-36 | 36" (91.4cm) |
| P103-48 | 48" (121.9cm) |



- Two 7" (17.8cm) high drawers above cupboard
- One adjustable shelf in cupboard

| Product # | Width |
|-----------|---------------|
| P106-36 | 36" (91.4cm) |
| P106-42 | 42" (106.7cm) |
| P106-48 | 48" (121.9cm) |

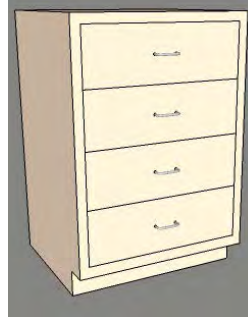
Standing Height



Section View

- Standard without locks
- All cabinets include a cutout for service access; if cabinet backs are exposed, a finished back is required
- Order work surfaces separately

Drawer Cabinets



- Four 7" (17.8cm) high drawers

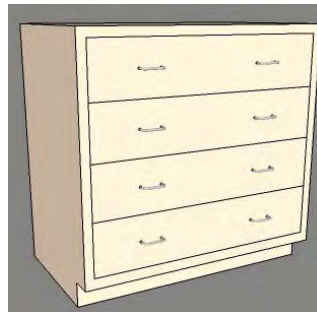
| Product # | Width |
|-----------|--------------|
| P122-18 | 18" (45.7cm) |
| P122-24 | 24" (60.9cm) |

Double Door Sink Cabinets



- Solid hinged doors
- Back has cutout for large sinks

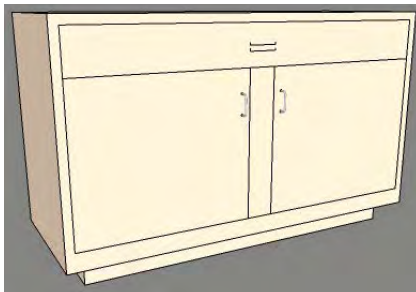
| Product # | Width |
|-----------|---------------|
| P181-36 | 36" (91.4cm) |
| P181-48 | 48" (121.9cm) |



- Four 7" (17.8cm) high drawers

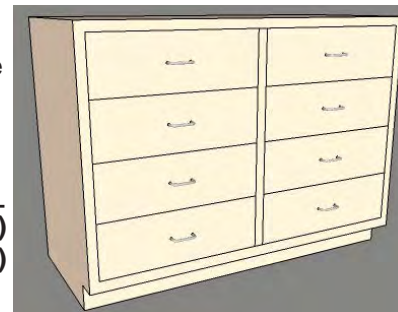
| Product # | Width |
|-----------|--------------|
| P121-36 | 36" (91.4cm) |

End Island Sink Cabinets



- Solid hinged doors
- Back has cutout for large sinks
- Toe space on 3 sides

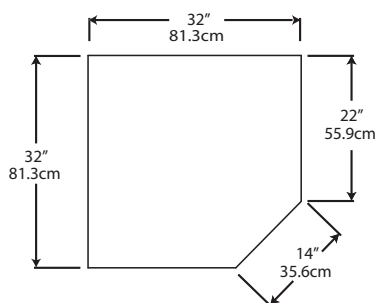
| Product # | Width |
|-----------|---------------|
| P186-52 | 52" (137.2cm) |
| P186-58 | 58" (147.3cm) |



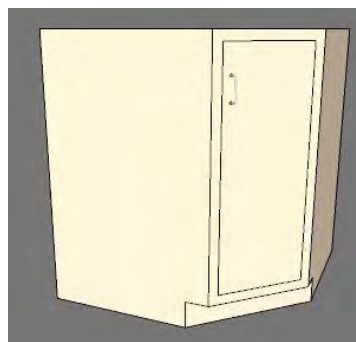
- Eight 7" (17.8cm) high drawers

| Product # | Width |
|-----------|---------------|
| P124-48 | 48" (121.9cm) |

Corner Cabinet/Sink Cabinet



Corner Cabinet Plan View



- This cabinet can be used to incorporate potential dead space at the intersection of runs of casework
- Can be used to locate a smaller sink. See sink part # D30.

| Product # | Width |
|-----------|--------------|
| P190-32 | 32" (81.3cm) |

Standing Height For Hoods

Acid Storage Base Cabinets



- Solid hinged doors
- Chemical resistant lining with 1 1/2" spill lip
- One shelf
- Exhaust vent included
- Warning labels

| Product # | Width |
|-----------|---------------|
| P188-36GG | 36" (91.4cm) |
| P188-48GG | 48" (121.9cm) |

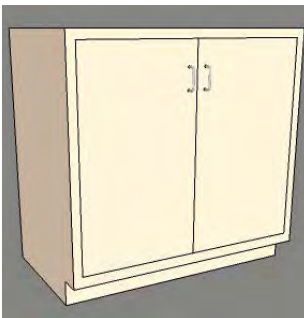
Solvent Storage Base Cabinets



- For storage of flammable/combustible materials
- Double doors
- One adjustable shelf
- Two 2"(5.1cm) vent plugs
- Grounding lug
- Silk screened warning labels
- Three point latching system
- UL 1275 listed
- Complies with NFPA Standards and OSHA Regulations

| Product # | Width |
|-----------|---------------|
| P189-36 | 36" (91.4cm) |
| P189-48 | 48" (121.9cm) |

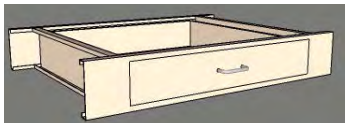
Standard Hood Base Cabinets



- Standard cabinet for hoods
- One adjustable shelf
- Solid hinged doors

| Product # | Width |
|-----------|---------------|
| P103-30 | 30" (76.2cm) |
| P103-36 | 36" (91.4cm) |
| P103-48 | 48" (121.9cm) |

Apron Frames and Rails



| Product Number | Width | Depth | No. of Drawers |
|----------------|-------------|-------------|----------------|
| TBA-3022-1 | 30"(76.2cm) | 22"(54.8cm) | 1 |

- Height of apron frames is 4-1/2" (11.4cm)

Apron Rails



Apron Rail

- Two rails required for front and back support
- Supplied with end support brackets
- Can be cut to fit in the field

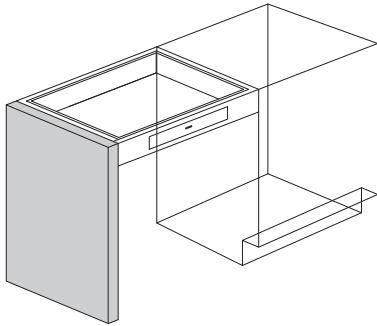
Use apron rails to support work surfaces:

- Suspended between two base cabinets
- Between cabinet and wall

| Product Number | Width |
|----------------|---------------|
| TBR-3002 | 30" (76.2cm) |
| TBR-3602 | 36" (91.4cm) |
| TBR-4802 | 48" (121.9cm) |
| TBR-7202 | 72" (182.9cm) |

- Height of apron rails is 2" (5.1cm)

Panel End Supports



- Panel is 2" wide (5.1cm)
- Use in place of a cabinet at one end of a cabinet run to support drawer frames or apron rails
- Can be used to support the intersection of two aprons or apron rails
- Each panel has two leveling feet

Product Number Width
Sitting Height 28 1/2" (72.4cm)
TPO-2822 22"(55.9cm) deep

Standing Height 35 1/2" (90.2cm)
TPO-3522 22"(55.9cm) deep

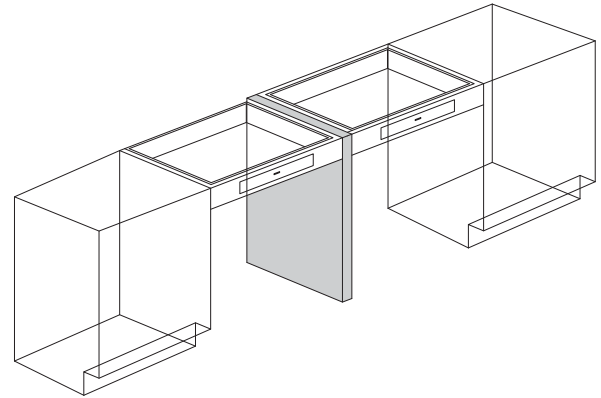
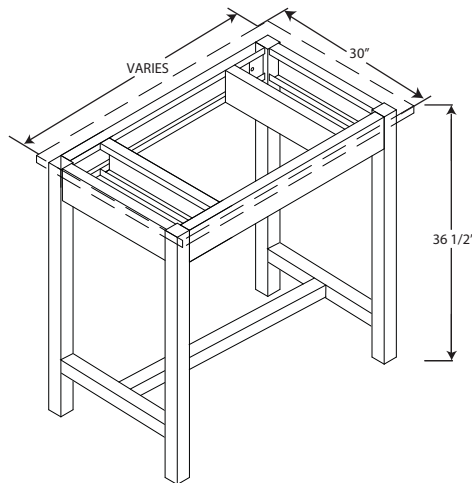


Table Assemblies

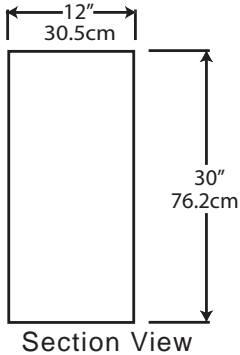
- Table assemblies include a 4 1/2" high apron, end legs and spreaders as shown.
- End legs are furnished complete with leveling feet and black floor boots. Tables are shipped in pieces to be assembled at the jobsite.
- Available worksurfaces are black 1" thick epoxy or phenolic resin. They overlap the table frames by 1".



Standing Height Tables are 36 1/2" High

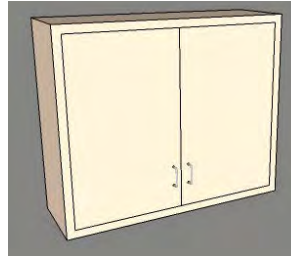
| Table Frame Part Number | Table Size (Including available worksurface) | Black Epoxy WorkSurface Part Number | Black Phenolic WorkSurface Part Number |
|-------------------------|--|-------------------------------------|--|
| TBH-4830 | 48" Long x 30" D x 36 1/2" H 121.9cm Long x 76.2cm D x 92.7cm H | TLE-4830 | TLP-4830 |
| TBH-6030 | 60" Long x 30" D x 36 1/2" H 152.4cm Long x 76.2cm D x 92.7cm H | TLE-6030 | TLP-6030 |
| TBH-7230 | 72" Long x 30" D x 36 1/2" H 182.8cm Long x 76.2cm D x 92.7cm H | TLE-7230 | TLP-7230 |

Wall and Tall Cabinets



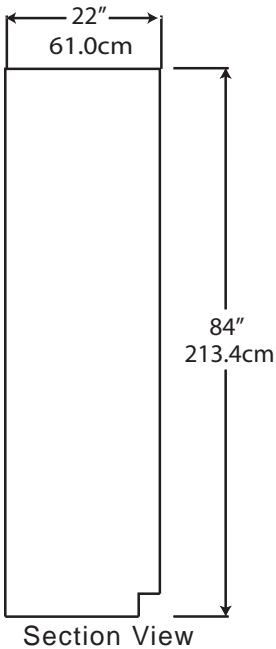
- Cases include recessed bottoms
- Standard without locks
- Two shelves are included and are adjustable in half-inch increments
- Cases have recessed backs for wall hanger cleats (not included)

Wall Cabinets



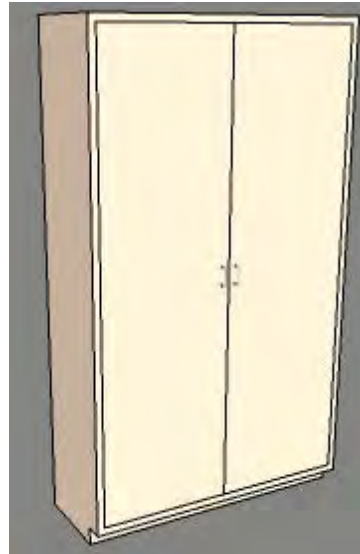
- Solid panel
- Hinged double doors

| Product # | Width |
|-----------|--------------|
| P203-36 | 36"(91.4cm) |
| P203-48 | 48"(121.9cm) |



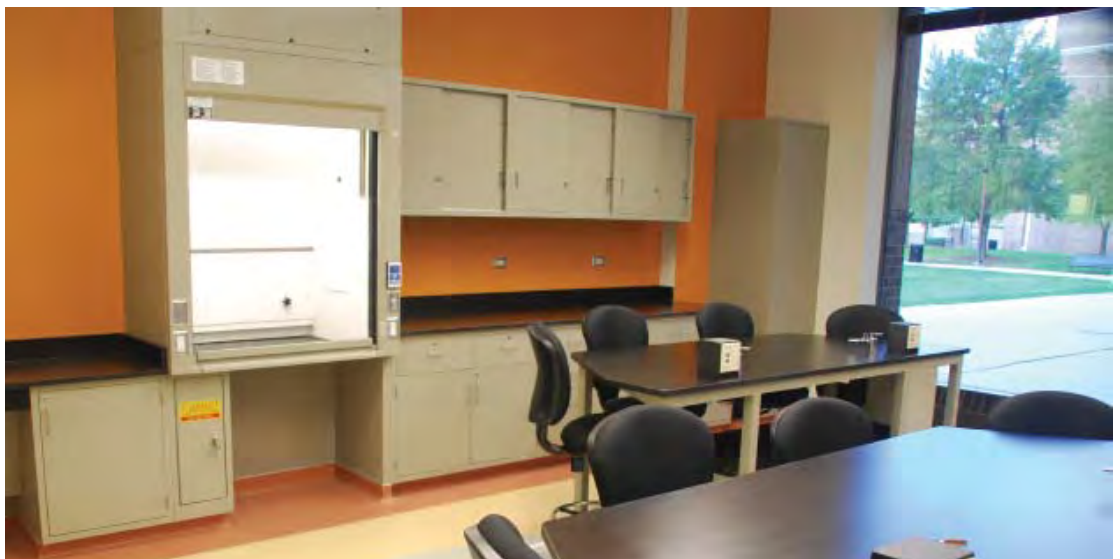
- Standard without locks
- Five shelves are included and are adjustable in half-inch increments
- Must be anchored to wall
- When installing tall cases under soffits, 85-1/2" minimum height is required from finished floor to finished soffit

Tall Cabinets



- Solid panel
- Hinged double doors

| Product # | Width |
|-----------|--------------|
| P303-48 | 48"(121.9cm) |



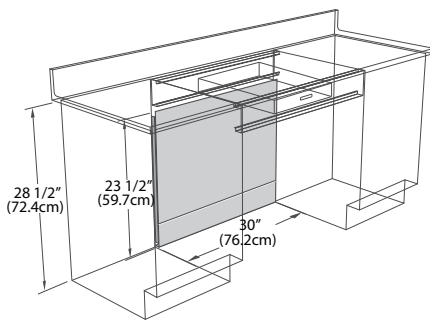
Casework Trim and Accessories

Knee Space Panels

- Knee Space panels are designed to close off the space between the floor and the bottom of the apron.
- They are sized for both 28 1/2" high and 35 1/2" high assemblies.

Sitting Height Removable Knee Space Panel for use with Drawer Aprons

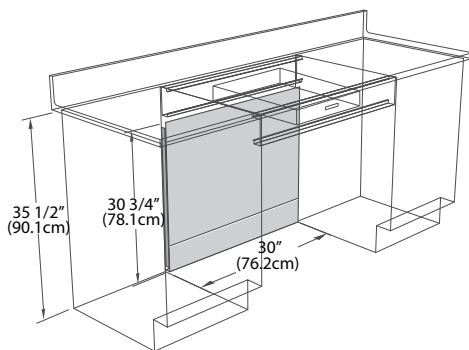
23 1/2" high (59.7cm) for 28 1/2" High (72.4cm) assemblies



| <u>Product Number</u> | <u>Width</u> |
|-----------------------|--------------|
| KSL-3004 | 30" (76.2cm) |

Standing Height Removable Knee Space Panel for use with Drawer Aprons

30 3/4" high (78.1cm) for 35 1/2" High (90.1cm) assemblies



| <u>Product Number</u> | <u>Width</u> |
|-----------------------|--------------|
| KSH-3004 | 30" (76.2cm) |

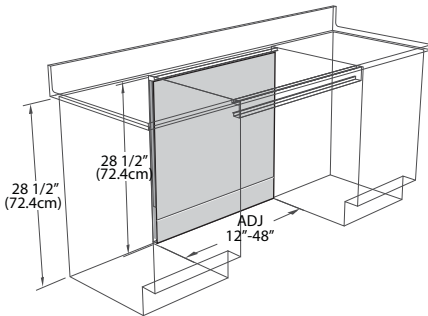


Knee Space Panels

- Knee Space panels are designed to close off the space between the floor and the bottom of the apron.
- They are sized for both 28 1/2" high and 35 1/2" high assemblies.

Sitting Height Removable Knee Space Panel for use with 2" High Apron Rails

28 1/2" high (72.4cm) for 28 1/2" high (72.4cm) assemblies

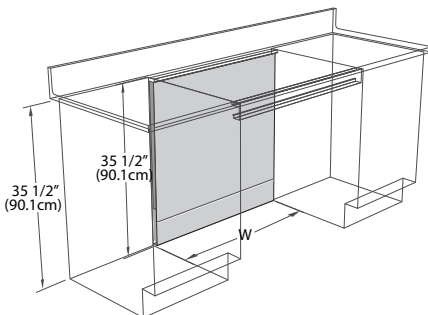


| Product Number | Width |
|----------------|---|
| KSL-ADJ* | ADJUSTABLE (12"-48") (30.5-121.9cm) |

*Cut to fit and includes slip fit trim angle

Standing Height Removable Knee Space Panel for use with 2" High Apron Rails

35 1/2" high (90.1cm) for 35 1/2" high (90.1cm) assemblies



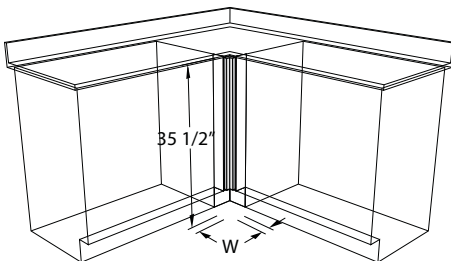
| Product Number | Width |
|----------------|---|
| KSH-30 | 30" (76.2cm) |
| KSH-36 | 36" (91.4cm) |
| KSH-48 | 48" (121.9cm) |
| KSH-ADJ* | ADJUSTABLE (12"-48") (30.5-121.9cm) |

*Cut to fit and includes slip fit trim angle

Base Cabinet Fillers, Scribes and Panels

Corner fillers

Standing Height 35 1/2" high



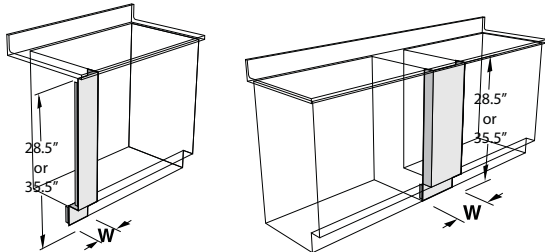
Standing Height 35 1/2" High

| Product Number | Width |
|----------------|--|
| FCH-01 | 1" (2.5cm) |
| FCH-ADJ* | ADJUSTABLE (2"-18") (5.1-48.7cm) |

*Cut to fit and includes slip fit trim angles

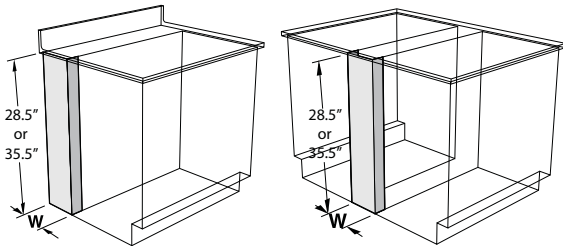
- For use at the intersection of two runs of casework
- Includes concealed clips for attachment to cabinets

Front Filler Panels



- For use between adjacent base cabinets or between a cabinet and wall
- Can be cut to size in the field
- Includes concealed clips for attaching to the cabinet

Rear and Center Filler Panels



- For use between back-to-back base cabinets or to close space at the rear of the cabinet
- Can be cut to size
- Includes concealed clips for attaching to the cabinet

Pipe Enclosure

- Used to provide a cover for pipes running from the ceiling to the work surface
- Can be used for island or perimeter locations
- Can support pegboards or water purification systems
- Cover pre-punched for attachment

| Product Number | Size |
|----------------|---|
| P509-GG | 84" T x 18" W x 6" D (213.4cm x 45.7cm 15.2cm) |

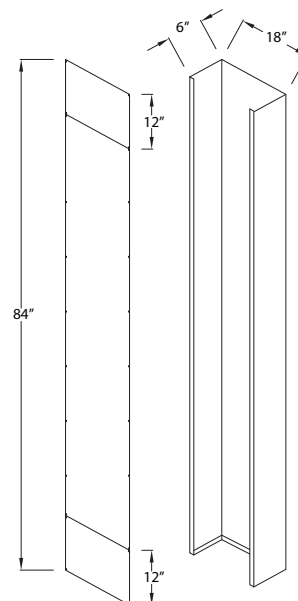
| Product Number | Width |
|---|---------------------------|
| For sitting height cabinets 28 1/2" Tall | |
| FFL-ADJ* | 2-18" (5.1-45.7cm) |

| | |
|--|---------------------------|
| For standing height cabinets 35 1/2" Tall | |
| FFH-01 | 1" (2.5cm) |
| FFH-04 | 4" (10.2cm) |
| FFH-08 | 8" (20.3cm) |
| FFH-ADJ* | 2-18" (5.1-45.7cm) |

- Cut to fit and includes slip to fit trim angle

| Product Number | Width |
|---|--------------------|
| For sitting height cabinets 28 1/2" (72.4cm) | |
| FRL-07 | 7" (17.8cm) |

| | |
|--|---------------------|
| For standing height cabinets 35 1/2" (90.1cm) | |
| FRH-07 | 7" (17.8cm) |
| FRH-08 | 8" (20.3cm) |
| FRH-14 | 14" (35.5cm) |
| FRH-20 | 20" (50.8cm) |



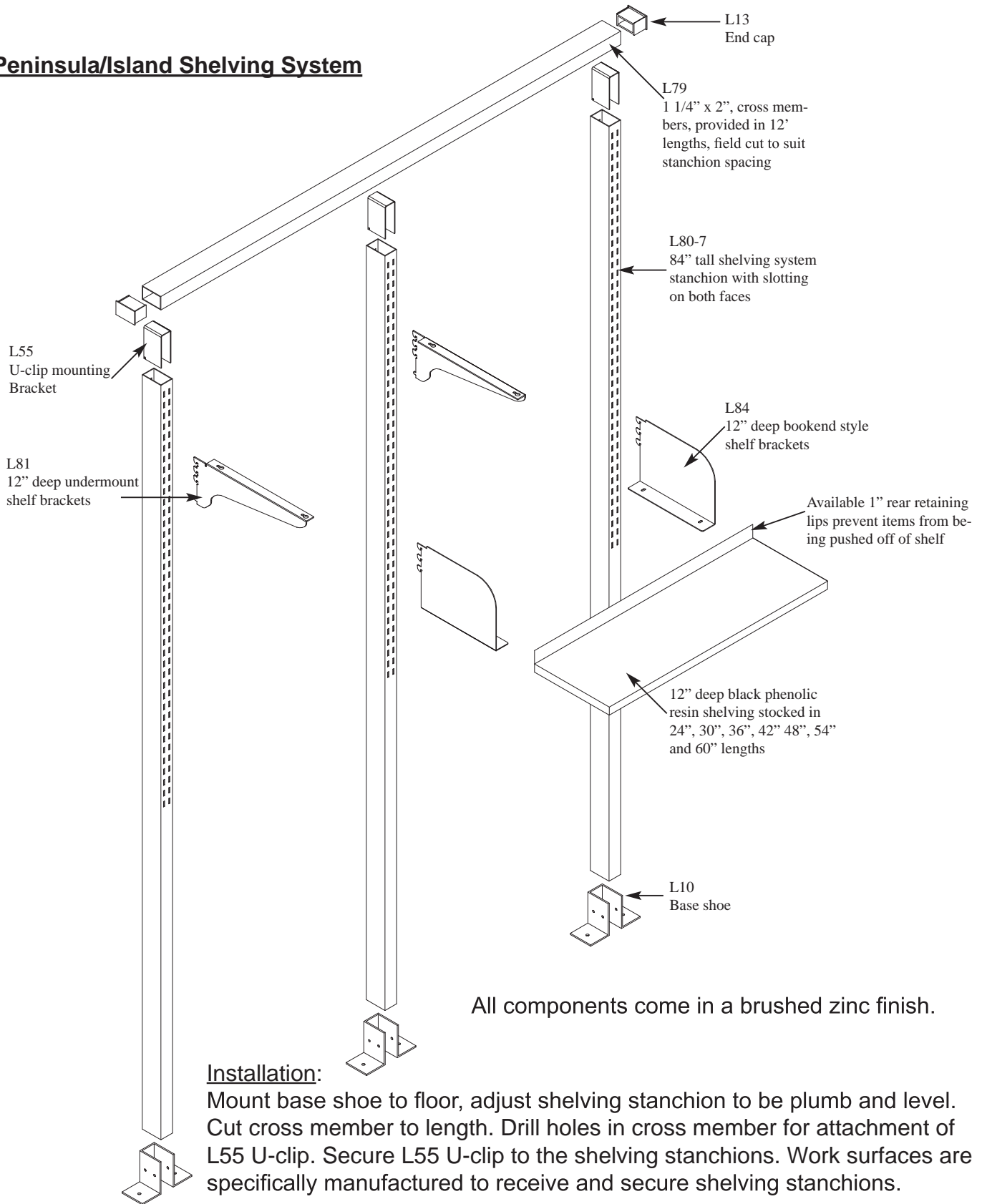
Lab Shelving Systems



● ● ● ● ●
SOUTHWEST**SOLUTIONS**GROUP

SouthwestSolutions.com | 800-803-1083 | info@southwestsolutions.com

Peninsula/Island Shelving System

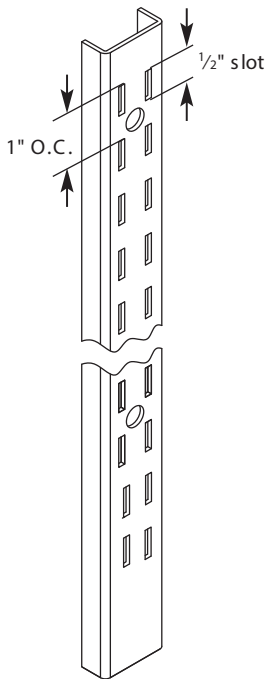


All components come in a brushed zinc finish.

Installation:

Mount base shoe to floor, adjust shelving stanchion to be plumb and level. Cut cross member to length. Drill holes in cross member for attachment of L55 U-clip. Secure L55 U-clip to the shelving stanchions. Work surfaces are specifically manufactured to receive and secure shelving stanchions.

L44-3 Wall Standard



| Part Number | Length |
|-------------|-------------|
| L44-3 | 3' (91.4cm) |

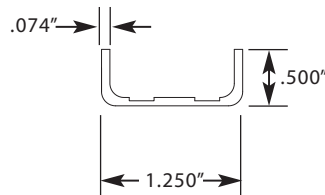
* Use #10 screw for anchoring

Application:

General purpose shelving and hangrod

Features:

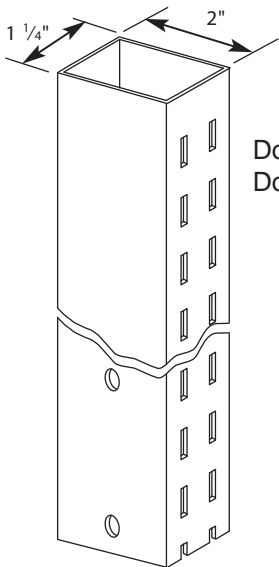
- .074" thick steel for superior strength
- On center dimension from counter-sunk screw hole to counter-sunk screw hole is 6"



Finish:

Brushed zinc

L80-7 84" tall x 1 1/4" x 2" Peninsula/Island system stanchion



Double faced,
Double Slotted

| Part Number | Length |
|-------------|--------------|
| L80-7 | 7' (213.4cm) |

Application:

- Double faced, double slotted, peninsula/island shelving stanchion
- This shelving system is for use between back to back cabinets. Epoxy resin or phenolic resin worksurfaces are to be specifically bored to receive and secure stanchions.

Features:

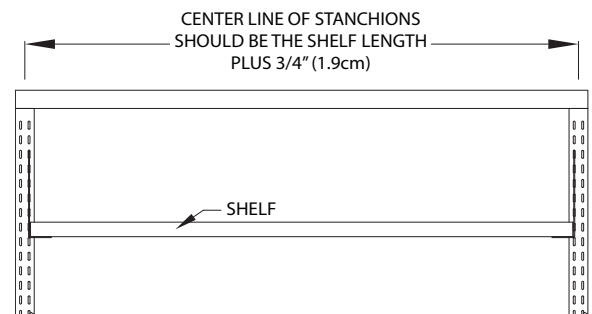
- 16 GA. steel for superior strength
- Double slotted on both sides

Finish:

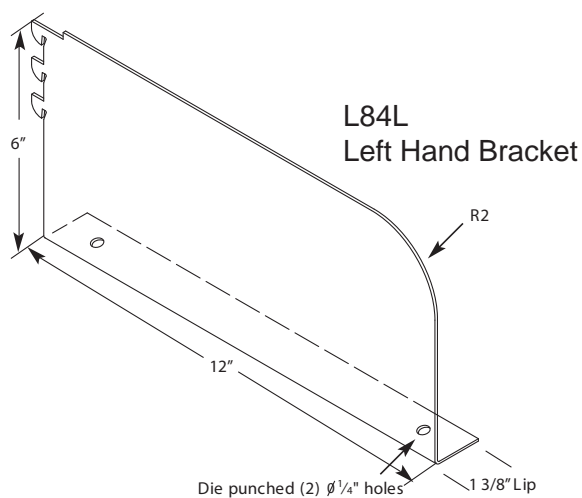
Brushed zinc

Stanchion Spacing:

Stanchions should be spaced so that the center line of each one is 3/4" longer than the respective shelf to be hung. See example to the right:



L84 Bookend Shelf Bracket



| Part Number | Length |
|-------------|--------------|
| L84L | 12" (30.5cm) |
| L84R | 12" (30.5cm) |

Application:

General purpose bookend shelf bracket

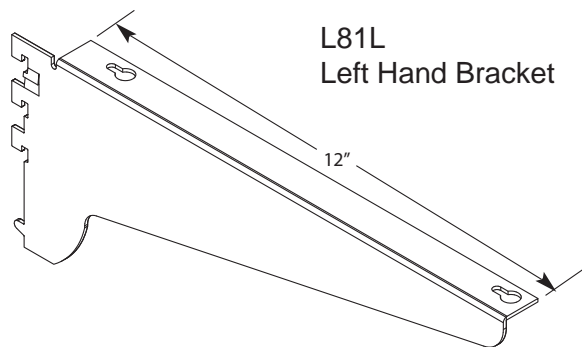
Features:

- 14GA. thick steel for superior strength
- (2) Die punched 1/4" diameter holes
- Works with L44-3 wall mount standard and L80-7 stanchion
- Brackets are available in left and right hand options

Finish:

Brushed zinc

L81 Flange Style Bracket



| Part Number | Length |
|-------------|--------------|
| L81L | 12" (30.5cm) |
| L81R | 12" (30.5cm) |

Application:

General purpose under mount bracket

Features:

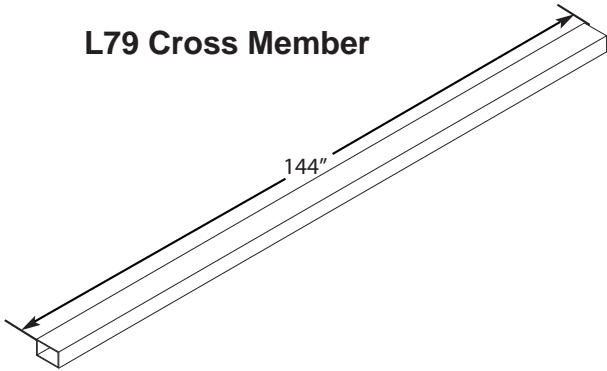
- .085" thick tempered steel with stabilizer tab
- Keyhole slots for shelf mounting
- Works with L44-3 standard and L80-7 stanchion
- Brackets are available in left and right hand options

Finish:

Brushed zinc



L79 Cross Member



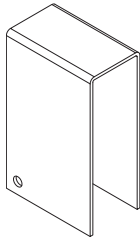
| Part Number | Length |
|-------------|---------------|
| L79-12 | 12' (365.8cm) |

Application:
Cross member for L80-7 stanchions, cut to suit stanchion spacing

Features:
• 16 GA. construction

Finish:
Brushed zinc

L55 U-Clip Mounting Bracket

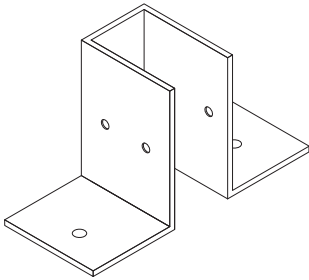


| Part Number |
|-------------|
| L55 |

Application:
Fits inside L80-7 1 1/4" x 2" stanchion for the secure attachment to cross member

Finish:
Brushed zinc

L10 Base Shoe



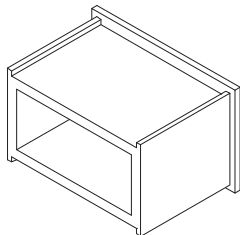
| Part Number |
|-------------|
| L10 |

Application:
For use as an anchoring plate with L80-7 peninsula/ island upright assembly

Features:
• Fits on outside of L80-7 stanchion
• 16 GA. construction

Finish:
Brushed zinc

L13 End Cap



| Part Number |
|-------------|
| L13 |

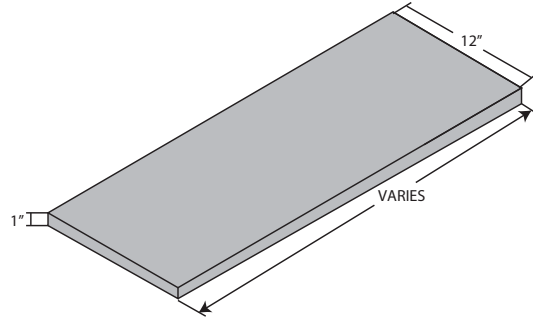
Application:
Inserted at each exposed end of cross members for a finished appearance

Finish:
Black Plastic



Shelving

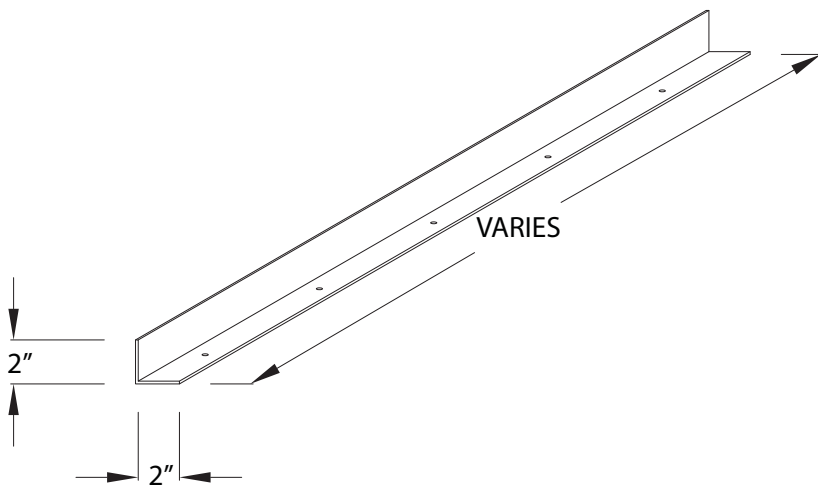
- 12" (30.5cm) deep
- Chemical resistant black phenolic resin
- 1" (2.54cm) thick
- Front edge finished
- All other shelving parts ordered separately



| Catalog # | Width |
|------------------|---------------|
| PS1224 | 24" (61.0cm) |
| PS1230 | 30" (76.2cm) |
| PS1236 | 36" (91.4cm) |
| PS1242 | 42" (106.7cm) |
| PS1248 | 48" (121.1cm) |
| PS1254 | 54" (137.2cm) |
| PS1260 | 60" (152.4cm) |

Shelf Rear Retaining Lips for bookend style brackets

- Provides for 1" (2.54cm) rear lip for island or peninsula shelving
- Attaches to the bottom of shelf
- Holes for attachment spaced at 6" intervals
- Brushed zinc finish to match shelving system
- Sized to fit shelf



| Catalog # | For Shelf Size: |
|------------------|------------------------|
| SLA24 | 24" |
| SLA30 | 30" |
| SLA36 | 36" |
| SLA42 | 42" |
| SLA48 | 48" |
| SLA54 | 54" |
| SLA60 | 60" |



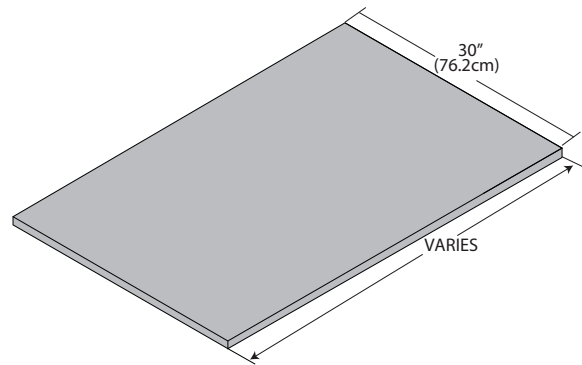
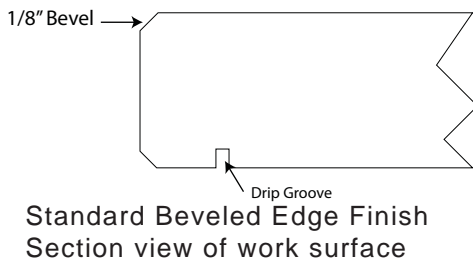
Laboratory Work Surfaces

Custom Manufactured Work Surfaces

Please note that we offer custom laboratory work surfaces in both 1" thick black epoxy resin and phenolic resin. These custom work surfaces are available for shipment within 6 business days of approved drawings. They will be designed and engineered to suit your needs. Contact us for full details.

Work Surfaces without cutouts

- Chemical resistant black epoxy or phenolic resin
- 1" (2.54cm) thick
- Curb must be ordered separately
- Front edge finished
- All other edges are square

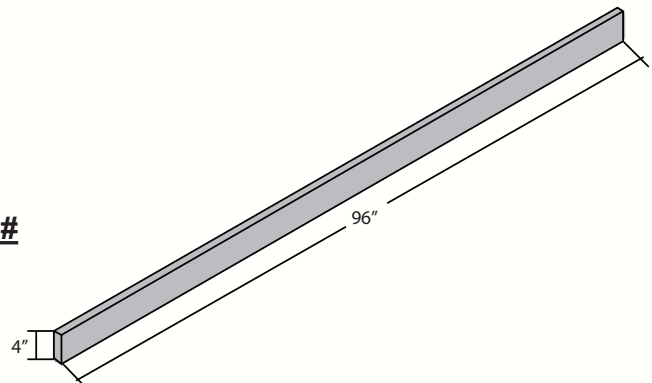


| Width | Depth | Epoxy part # | Phenolic part # |
|---------------|--------------|--------------|-----------------|
| 36" (91.4cm) | 30" (76.2cm) | LE3630-1 | LP3630-1 |
| 48" (121.9cm) | 30" (76.2cm) | LE4830-1 | LP4830-1 |
| 60" (152.4cm) | 30" (76.2cm) | LE6030-1 | LP6030-1 |
| 72" (182.9cm) | 30" (76.2cm) | LE7230-1 | LP7230-1 |
| 96" (243.8cm) | 30" (76.2cm) | LE9630-1 | LP9630-1 |

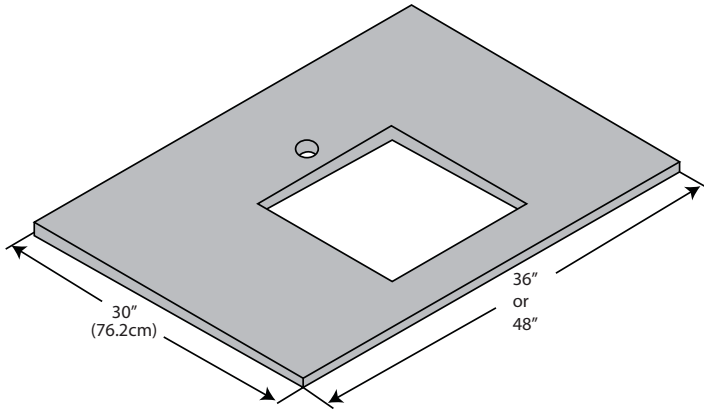
Work Surface Curb

- Chemical resistant black epoxy or phenolic resin
- 1" (2.5cm) thick x 4" (10.2cm) high
- Provided in 96" (243.8cm) lengths

| Length | Epoxy # | Phenolic # |
|---------------|----------|------------|
| 96" (243.8cm) | LE9604-1 | LP9604-1 |



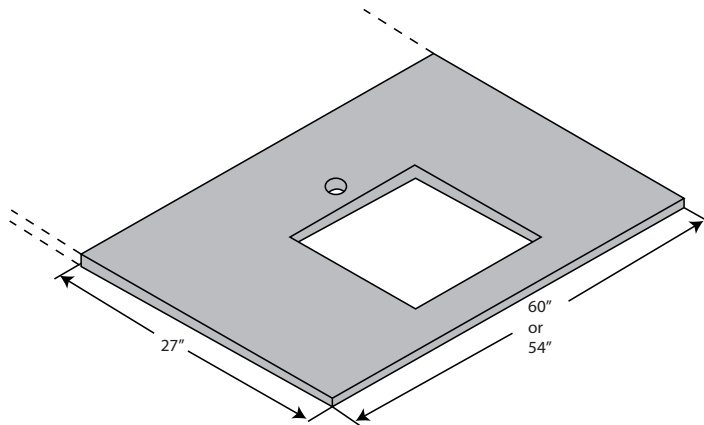
Work Surfaces with Sink Cutout



- Chemical resistant black epoxy or phenolic resin
- 30" (76.2cm) depth
- 1" (2.54cm) thick
- Sink cutout 15" x 25" (38.1cm x 63.5cm) to receive a D55 drop in sink, fixture hole cutout diameter is 1 3/8" (3.5cm)
- Sink and fixture hole are centered in width of top
- Order sink separately
- Order curb separately
- Top depth: 30" (76.2cm)
- Front edge finished

| Width | Epoxy part # | Phenolic part # |
|---------------|---------------------|------------------------|
| 36" (91.4cm) | LE3630-D55 | LP3630-D55 |
| 48" (121.9cm) | LE4830-D55 | LP4830-D55 |

End Island Sink Work Surfaces

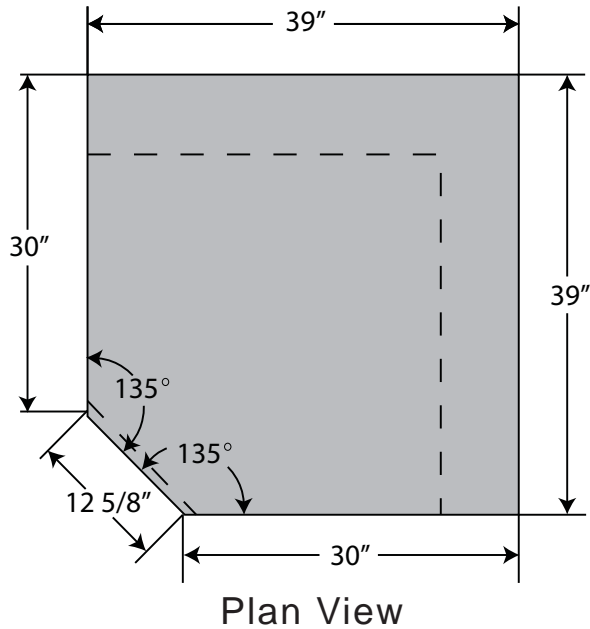


- Work surface for a P186-58 or P186-52 cabinet
- Chemical resistant black epoxy or phenolic resin
- 30" (76.2cm) depth
- 1" (2.54cm) thick
- Sink cutout 15" x 25" (38.1cm x 63.5cm) to receive a D55 drop in sink, fixture hole cutout diameter is 1 3/8" (3.5cm)
- Sink and fixture hole are centered in width of top
- Order sink separately
- Curb must be ordered separately
- Front and side edges are finished, rear edge is square

| Width | Epoxy part # | Phenolic part # |
|---------------|---------------------|------------------------|
| 54" (137.2cm) | LE5427E-D55 | LP5427E-D55 |
| 60" (152.4cm) | LE6027E-D55 | LP6027E-D55 |



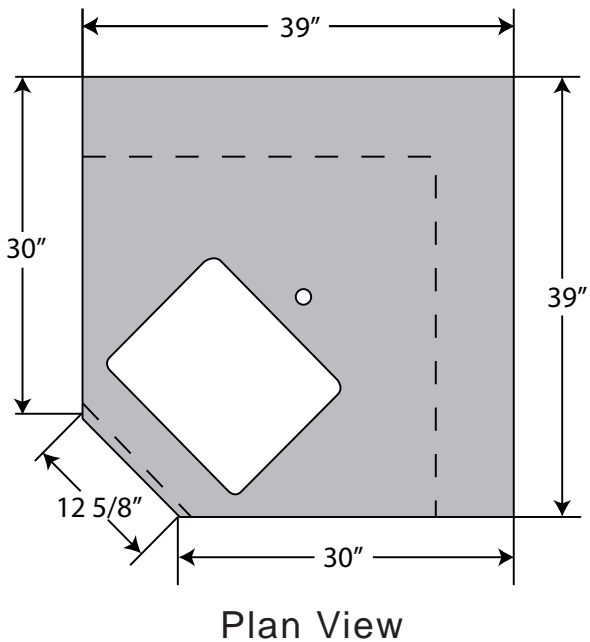
Corner Cabinet Work Surface



Corner Cabinet Work Surface

- Work Surface for a P190-32
- Top has a front finished edge
- Rear top overhang is 7" (17.8cm)
- Order curb separately

| <u>Length</u> | <u>Epoxy #</u> | <u>Phenolic #</u> |
|---------------|----------------|-------------------|
| 39" (99.1cm) | LE39CB-1 | LP39CB-1 |



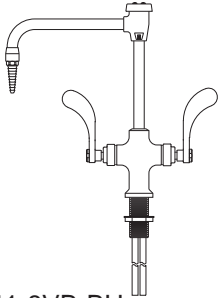
Corner Cabinet Work Surface with sink cutout

- Sink work surface for a P190-32 cabinet
- Sink cutout 15" x 18" (38.1cm x 45.7cm) to receive a D-30 sink, fixture hole diameter is 1 3/8" (3.5cm)
- Order sink separately
- Top has finished front edge
- Order curb separately

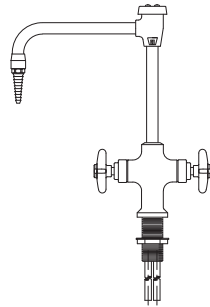
| <u>Length</u> | <u>Epoxy #</u> | <u>Phenolic #</u> |
|---------------|----------------|-------------------|
| 39" (99.1cm) | LE39CB-D30 | LP39CB-D30 |

Accessories

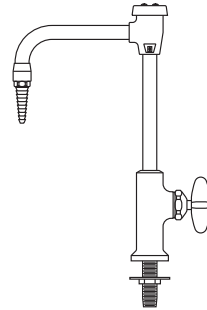
Faucets



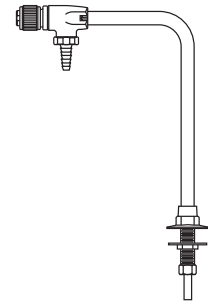
LB411-8VB-BH
Deck Mounted Blade Handle Hot and Cold Water Mixing Gooseneck Faucet with vacuum breaker made of chrome plated brass with an 8" swivel gooseneck. Removable serrated hose connector. Valves are disc type with renewable internal assemblies.



LB411-8V8
Deck Mounted Hot and Cold Water Mixing Gooseneck Faucet with vacuum breaker made of chrome plated brass with an 8" swivel gooseneck. Removable serrated hose connector. Valves are disc type with renewable internal assemblies.



LB611VB
Deck Mounted Gooseneck Water Faucet Chrome plated brass with an 6" spread rigid vacuum breaker type gooseneck. Removable serrated hose connector. Valve is disc type with a renewable internal assembly.



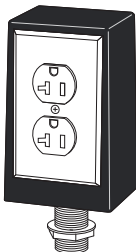
LB7833
Distilled, Deionized and Ultra-Pure Water Faucet (deck mounted) made of chrome plated brass. All polypropylene internal construction with 6" spread gooseneck.



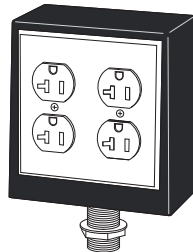
LB0055
Aerator for LB411 fixtures Anti-splash aerator can be used in lieu of the removable straight serrated hose connectors supplied with the goosneck water faucet. 3/8" I.P.S. male thread inlet.



Electrical - All stocked in a satin aluminum finish



LB433SA-WS
Single gang, double face 120 V/20 Amp Supplied with outlets and cover plates



LB633SA-WS
Double gang, double face 120 V/20 Amp Supplied with outlets and cover plates

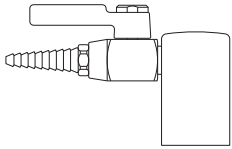


LB800SA-WS
This electrical pedestal can accommodate a variety of styles and configurations. It can provide for as many as 8 outlets from a single pedestal and can also act to house communication services. Outlets and cover plates supplied separately.

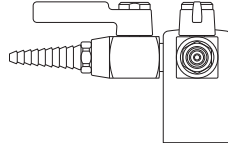
Service Fixtures

Laboratory Ball Valves

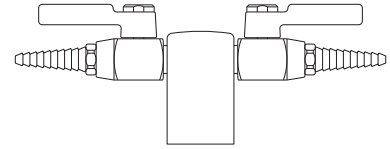
Complete with 3/8" I.P.S. tank nipple. Specify service desired by noting a G, A, N, or V after the part number



LB4200-131WSA
Gas, Air, Nitrogen or Vacuum Deck Mounted Fitting is chrome plated brass. Valve provides on/off control of gas, air or vacuum at pressures up to 75 PSI.

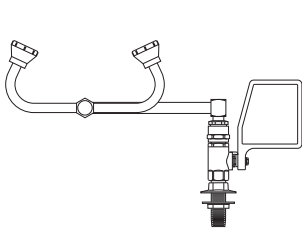


LB4200-132AWSA
Double Gas, Air, Nitrogen or Vacuum Deck Mounted Fitting same as No. LB4200-131WSA except consists of a 2-way 90 degree outlet turret and two laboratory ball valves.

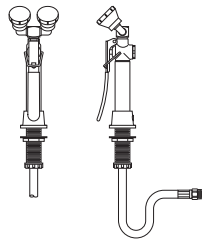


LB4200-132SWSA
Double Gas, Air, Nitrogen or Vacuum Deck Mounted Fitting same as No. LB4200-131WSA except consists of a 2-way 180 degree outlet turret and two laboratory ball valves.

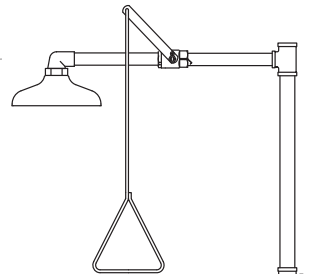
Emergency Equipment



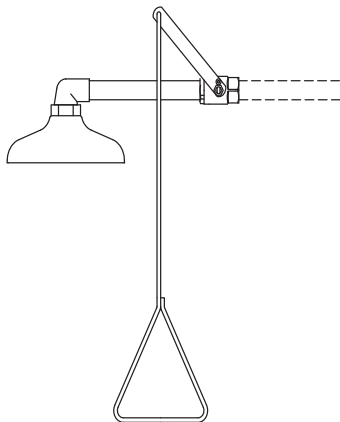
LB806
Eye Wash (deck mounted) with two Gentle Spray outlet heads, stay-open ball valve and 90° swivel feature Right mounting.
LB806LH for left hand mounting



LB1022
Deck Mounted Dual Purpose Eye Wash/Drench Hose with two Gentle Spray outlet heads angled at 45° and squeeze valve with locking clip.



LB909
Free standing 10" dia. drench shower made of orange ABS plastic. Has a 1" ball valve operated by a rigid pull-rod and easy grip handle. Eye wash fixture with stainless steel bowl, four Gentle Spray heads and a "PUSH TO OPERATE" ball valve. Eye wash and shower operate independently. Overall height is 80" 1 1/4" I.P.S. female thread inlet and outlet.



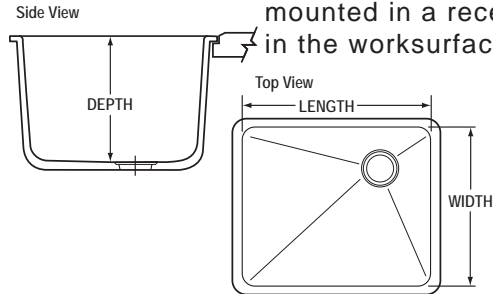
LB643
Emergency shower Head Assembly Includes 10" diameter orange ABS plastic shower head. Operated by a rigid pull-rod and easy to grip handle.

Drop in Epoxy Resin Sinks

DropIn® Sink Styles



Dimensions Key

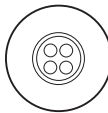


Drop In sinks are mounted in a recess in the worksurface



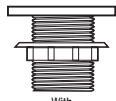
S03-R

Top View



With Removable Disc Strainer

Side View



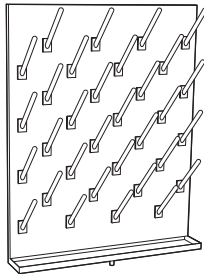
With Lock Nut

INSTOCK Epoxy resin sinks are only available in black

| Sink Part No. | Length | Width | Depth | Outlet | Weight (lb) |
|------------------|--------|-------|-------|--------|-------------|
| D-30 | 18.0 | 15.0 | 11.0 | Corner | 49 |
| D-55 | 25.0 | 15.0 | 10.0 | Corner | 60 |
| LB-U04 Cup Style | 6 | 3 | 3.7 | ---- | -- |

- All sinks come with tail piece outlet

Pegboards



Stainless Steel Pegboards

| Part Number | Size |
|-------------|---------------|
| LB-SS2430 | 24" W x 30" H |
| LB-SS3630 | 36" W x 30" H |

Type 304 stainless steel pegboard with 32, 1/2" diameter, 6" long, white polypropylene pegs. Furnished with 4" wide drip trough and clear plastic drain tube.

| With Finished Backs | Size |
|---------------------|---------------|
| LB-SS2430FB | 24" W x 30" H |
| LB-SS3630FB | 36" W x 30" H |



SOUTHWEST SOLUTIONS GROUP

Labs Built With Trust As Strong As Steel



Proudly Made in the USA

