

**"WE TAKE CARE OF THE GEAR
THAT TAKES CARE OF YOU"**



THE RED RACK™ ADVANTAGE



- Built in 18", 20" and 24" wide sections
 - Available in wall mounted, mobile and freestanding units
 - Made of heavy-duty steel with red powder coated finish
 - Built with a tubular steel design
 - Security option available for all units
 - Custom colors available upon request
- Each section comes complete with:
 - (1) Adjustable boot shelf
 - (1) Adjustable helmet shelf
 - (1) Individual hanging poles
 - (2) Apparel hooks
 - (1) Name plate

STRONGER & SAFER

Built with individual 1.25" square tubular frames to stand up to the demanding fire fighting environment.

ORGANIZED & CUSTOMIZABLE

Keeps your gear organized. Custom applications available if special sizing is required.

DEPARTMENT & DESIGN FRIENDLY

Open back design allows for easy wall access and use of outlets. No electrician or wiring required.

HEAVY DUTY - TIME TESTED

Powder coating will not fade or chalk under UV light conditions and stands up to a 184 hr. salt spray test.

USER FRIENDLY

Complete with safety and assembly instructions making it easy to install and maintain.

WE STAND BEHIND OUR PRODUCTS

Our units come complete with a five year limited warranty on manufacturer defect.



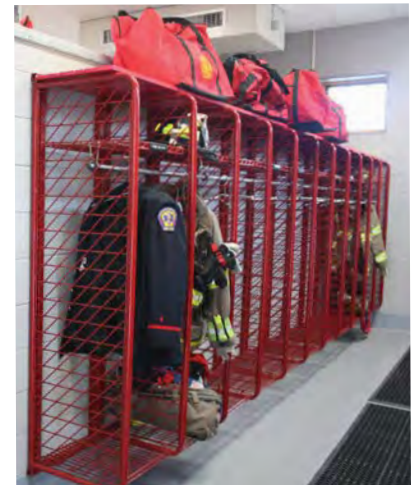
WALL MOUNTED RED RACK™

LENGTH x 20" D x 72" H

- Can be ordered in any run length thanks to our exclusive modular design

* Security option includes top security shelf & lockable door ordered per locker opening.
Security back panel can be ordered upon request but not required for wall units.

ITEM #:	LENGTH:	ITEM #:	LENGTH:	ITEM#:	LENGTH:
RRWM-1/18	19.75"	RRWM-1/20	21.75"	RRWM-1/24	25.75"
RRWM-2/18	38.50"	RRWM-2/20	42.50"	RRWM-2/24	50.50"
RRWM-3/18	57.25"	RRWM-3/20	63.25"	RRWM-3/24	75.25"
RRWM-4/18	76.00"	RRWM-4/20	84.00"	RRWM-4/24	100.00"
RRWM-5/18	94.75"	RRWM-5/20	104.75"	RRWM-5/24	124.75"
RRWM-6/18	113.50"	RRWM-6/20	125.50"	RRWM-6/24	149.50"
RRWM-7/18	132.25"	RRWM-7/20	146.25"	RRWM-7/24	174.25"
RRWM-8/18	151.00"	RRWM-8/20	167.00"	RRWM-8/24	199.00"
RRWM-9/18	169.75"	RRWM-9/20	187.75"	RRWM-9/24	223.75"
RRWM-10/18	188.50"	RRWM-10/20	208.50"	RRWM-10/24	248.50"
RRWM-11/18	207.25"	RRWM-11/20	229.25"	RRWM-11/24	273.25"
RRWM-12/18	226.00"	RRWM-12/20	250.00"	RRWM-12/24	298.00"
RRWM-13/18	244.75"	RRWM-13/20	270.75"	RRWM-13/24	322.75"
RRWM-14/18	263.50"	RRWM-14/20	291.50"	RRWM-14/24	347.50"
RRWM-15/18	282.25"	RRWM-15/20	312.25"	RRWM-15/24	372.25"
SEC-18/WM	*See notes	SEC-20/WM	*See notes	SEC-24/WM	*See notes



WALL SPACER

Great for providing separation from walls and floors to account for obstacles such as conduit or piping.

- 2" spacer Includes: (1) 2" wall spacer & (1) 6" floor support
- 6" spacer Includes: (1) 6" wall spacer & (1) 6" floor support

ITEM #:	SIZE:
WS-2K: 2" Spacer	4.375" x 3.625" x 4.25"
WS-6K: 6" Spacer	4.375" x 3.625" x 8.25"



FREESTANDING RED RACK™

Single Sided: LENGTH x 20" D x 82" H

Double Sided: LENGTH x 40" D x 82" H

- Single sided freestanding units can be ordered in any run length thanks to our exclusive modular design
- Complete with heavy-duty legs to keep rack elevated off the floor

** Security option for single sided units includes top security shelf, rear security panel and lockable door. Double sided includes top security shelf and lockable door. Security options are ordered per opening.*



Single Sided Units

ITEM #:	LENGTH:	ITEM #:	LENGTH:	ITEM #:	LENGTH:
RFSS-2/18	38.50"	RFSS-2/20	42.50"	RFSS-2/24	50.50"
RFSS-3/18	57.25"	RFSS-3/20	63.25"	RFSS-3/24	75.25"
RFSS-4/18	76.00"	RFSS-5/20	104.75"	RFSS-5/24"	124.75"
RFSS-6/18	113.50"	RFSS-6/20	125.50"	RFSS-6/24	149.50"
RFSS-10/18	188.50"	RFSS-10/20	208.50"	RFSS-10/24	248.50"
RFSS-15/18	282.25"	RFSS-15/20	312.25"	RFSS-15/24	372.25"
SEC-18/FS	*See notes	SEC-20/FS	*See notes	SEC-24/FS	*See notes

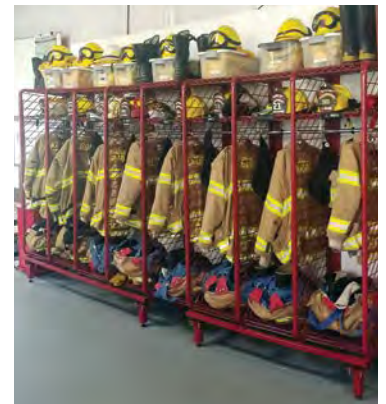


Double Sided Units

ITEM #:	LENGTH:	ITEM #:	LENGTH:	ITEM #:	LENGTH:
RFDS-6/18	57.25"	RFDS-4/20	42.50"	RFDS-4/24	50.50"
RFDS-8/18	76.00"	RFDS-6/20	63.25"	RFDS-6/24	75.25"
RFDS-6/18SEC*	57.25"	RFDS-4/20SEC*	42.50"	RFDS-4/24SEC*	50.50"
RFDS-8/18SEC*	76.00"	RFDS-6/20SEC*	63.25"	RFDS-6/24SEC*	75.25"



Bases can be connected to create desired length.



MOBILE RED RACK™

Single Sided: LENGTH x 20" D x 81" H

Double Sided: LENGTH x 40" D x 81" H

- Complete with 5" swivel casters; (2) with foot operated brakes

* Security option for single sided units includes top security shelf, rear security panel and lockable door. Double sided units includes top security shelf and lockable door. Security options are ordered per opening.



Single Sided Units

ITEM #:	LENGTH:	ITEM #:	LENGTH:	ITEM #:	LENGTH:
RMSS-2/18	38.50"	RMSS-2/20	42.50"	RMSS-2/24	50.50"
RMSS-3/18	57.25"	RMSS-3/20	63.50"	RMSS-3/24	75.25"
RMSS-4/18	76.00"	RMSS-2/20SEC*	42.50"	RMSS-2/24SEC*	50.50"
RMSS-2/18SEC*	38.50"	RMSS-3/20SEC*	63.50"	RMSS-3/24SEC*	75.25"
RMSS-3/18SEC*	57.25"				
RMSS-4/18SEC*	76.00"				



Double Sided Units

ITEM #:	LENGTH:	ITEM #:	LENGTH:	ITEM #:	LENGTH:
RMDS-6/18	57.25"	RMDS-4/20	42.50"	RMDS-4/24	50.50"
RMDS-8/18	76.00"	RMDS-6/20	63.25"	RMDS-6/24	75.25"
RMDS-6/18SEC*	57.25"	RMDS-4/20SEC*	42.50"	RMDS-4/24SEC*	50.50"
RMDS-8/18SEC*	76.00"	RMDS-6/20SEC*	63.25"	RMDS-6/24SEC*	75.25"



BACK BOARD RACK

Organized storage for back boards in fire departments, rescue squads and hospitals.

- Can hold up to 8 boards at one time
- Available in wall mounted and/or mobile
- Mobile units complete with 5" swivel casters

ITEM #:	SIZE:
---------	-------

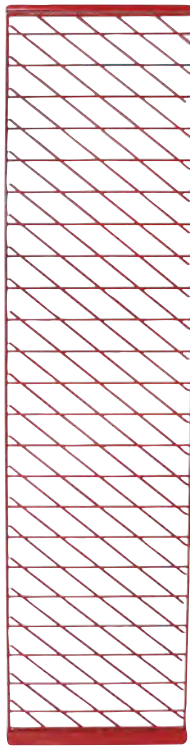
BBR-WM: Wall Mounted	20" x 20" x 72"
BBR-M: Mobile	20" x 20" x 81"

SECURITY OPTIONS

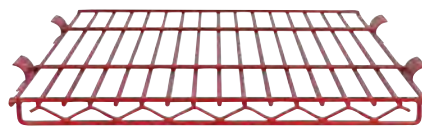
20" Security Door



20" Rear Security Panel



20" Top Security Shelf



Security Conversion Kit



SECURITY DOOR

Keep your gear secure by adding to your Red Rack™ Unit.

*Customer must supply their own lock.

ITEM #:	SIZE:
RD-18: 18" Security Door	17.5" x 69.5"
RD-20: 20" Security Door	19.625" x 69.5"
RD-24: 24" Security Door	23.5" x 69.5"

REAR SECURITY PANEL

Secure the backside of your Freestanding and Mobile Red Rack™ units. Contact us for info on Wall Mounted Options.

ITEM #:	SIZE:
SP-18: 18" Security Panel	14.5" x 72"
SP-20: 20" Security Panel	18.375" x 72"
SP-24: 24" Security Panel	20.625" x 72"

TOP SECURITY SHELF

Used as an additional storage shelf for non-secure Red Rack™ units.

ITEM #:	SIZE:
SS-18: 18" Security Shelf	18.375" x 17.125"
SS-20: 20" Security Shelf	20.75" x 17.125"
SS-24: 24" Security Shelf	24.375" x 17.125"

SECURITY CONVERSION KIT

2-Piece metal drilling kit for retrofitting security doors to older Red Rack™ systems not pre-drilled for security option.

ITEM #:	SIZE:
STK	24" x 2" x 10.5" 15.5" x 3.25" x 2.5"

GEAR GUARD



Designed to protect gear from UV degradation and particulates from diesel exhaust which increases the threat of cancer.

- Available for all Red Rack™ units*
- 8 oz. PVC laminate UV shield that is abrasion and tear resistant
- Fabric is anti-microbial and self deodorizing
- Fluid proof, stain resistant and can easily be cleaned
- Has anti-static properties and is flame retardant
- Thread is constructed of heavy-duty UV resistant polyester
- Heavy-duty #5 molded plastic zippers
- Label holder on front of unit



Gear Guards can be created for other Red Rack™ products. Call with questions and pricing.



*As gear guard covers are made to fit specific locker sizes and runs when ordered, they are considered custom order items. As such, they cannot be returned.

Wall Mounted Red Racks™

ITEM #:	SIZE:	TYPE:
GGR-WM-S18	18"	Starter Unit RRWM
GGR-WM-A18	18"	Add on Unit RRWM
GGR-WM-S20	20"	Starter Unit RRWM
GGR-WM-A20	20"	Add on Unit RRWM
GGR-WM-S24	24"	Starter Unit RRWM
GGR-WM-A24	24"	Add on Unit RRWM

Example: For a RRWM-10/20, you would order 1 each GGR-WM-S20 and 9 each GGR-WM-A20

Mobile Single Sided Red Racks™

ITEM #:	SIZE:	TYPE:
GGR-MSS-2/18	18"	RMSS-2/18
GGR-MSS-3/18	18"	RMSS-3/18
GGR-MSS-4/18	18"	RMSS-4/18
GGR-MSS-2/20	20"	RMSS-2/20
GGR-MSS-3/20	20"	RMSS-3/20
GGR-MSS-2/24	24"	RMSS-2/24
GGR-MSS-3/24	24"	RMSS-3/24

Freestanding Red Racks™

ITEM #:	SIZE:	TYPE:
GGR-FSS-S18	18"	Starter Unit for RFSS
GGR-FSS-A18	18"	Add on Unit for RFSS
GGR-FSS-S20	20"	Starter Unit for RFSS
GGR-FSS-A20	20"	Add on Unit for RFSS
GGR-FSS-S24	24"	Starter Unit for RFSS
GGR-FSS-A24	24"	Add on Unit for RFSS

Example: For a RFSS-10/20, you would order 1 each GGR-FSS-S20 and 9 each GGR-FSS-A20

Mobile & Freestanding Red Racks™

ITEM #:	SIZE:	TYPE:
GGR-MDS-6/18	18"	RMDS-6/18 or RFDS-6/18
GGR-MDS-8/18	18"	RMDS-8/18 or RFDS-8/18
GGR-MDS-4/20	20"	RMDS-4/20 or RFDS-4/20
GGR-MDS-6/20	20"	RMDS-6/20 or RFDS-6/20
GGR-MDS-4/24	24"	RMDS-4/24 or RFDS-4/24
GGR-MDS-6/24	24"	RMDS-6/24 or RFDS-6/24

THE ORIGINAL READY RACK®



- Available in wall mounted, freestanding and mobile
- Standard width of sections: 18" and 24" but can vary per locker configuration due to base/shelf widths
- Each unit comes complete with:
 - Full length grid dividers
 - (2) Levels of open wire shelving
 - (2) Apparel hooks per locker unit
 - (1) Name plate per locker unit
 - Hanging pole to run the length of the unit



DEPARTMENT & DESIGN FRIENDLY

Open back design allows for easy wall access and use of outlets. No electrician or wiring required.

HEAVY DUTY - TIME TESTED

Made with a durable, heavy-duty zinc chromate finish and protected with a clear-coat sealer to help prevent rusting.

USER FRIENDLY

Complete with safety and assembly instructions making it easy to install and maintain.

WE STAND BEHIND OUR PRODUCTS

Our units come complete with a five year limited warranty on manufacturer defect.

NEW TECH WALL MOUNTED READY RACK®

LENGTH x 21" D x 78" H

- Can be ordered in any run length thanks to our exclusive modular design
- Complete with shelf supports

ITEM #:	LENGTH:	ITEM #:	LENGTH:
NTWM-2/18	36"	NTWM-3/24	72"
NTWM-3/18	54"	NTWM-4/24	96"
NTWM-4/18	72"	NTWM-5/24	120"
NTWM-5/18	90"	NTWM-6/24	144"
NTWM-6/18	108"	NTWM-8/24	192"
NTWM-7/18	126"	NTWM-10/24	240"
NTWM-8/18	144"	NTWM-12/24	288"
NTWM-9/18	162"	NTWM-15/24	360"
NTWM-10/18	180"	NTWM-20/24	480"
NTWM-11/18	198"	NTWM-24/24	576"
NTWM-12/18	216"		
NTWM-14/18	252"		
NTWM-15/18	270"		
NTWM-16/18	288"		
NTWM-18/18	324"		
NTWM-20/18	360"		
NTWM-24/18	432"		
NTWM-30/18	540"		



MOBILE READY RACK®

SINGLE SIDED: 72" x 21" x 79"

DOUBLE SIDED: 72" x 36" x 79"

- Complete with support posts and (4) heavy-duty 5" casters
- Single sided units complete with 4" back ledge

Single Sided Units

Double Sided Units

ITEM #:	WIDTH:	ITEM #:	WIDTH:
MSS-3/24	24"	MDS-6/24	24"
MSS-4/18	18"	MDS-8/18	18"
MSS-5/14	14"	MDS-10/14	14"
MSS-6/12	12"	MDS-12/12	12"



FREESTANDING READY RACK®

Single Sided: LENGTH x 21" D x 74" H

Double Sided: LENGTH x 36" D x 74" H

- Can be ordered in any run length thanks to our exclusive modular design
- Complete with support posts and leveling bolts
- Single sided units complete with 4" back ledge

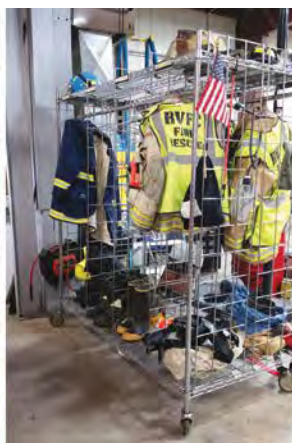
Single Sided Units

ITEM #:	LENGTH:	ITEM #:	LENGTH:
FSS-3/18	54"	FSS-3/24	72"
FSS-4/18	72"	FSS-4/24	96"
FSS-5/18	90"	FSS-5/24	120"
FSS-6/18	108"	FSS-6/24	144"
FSS-8/18	144"	FSS-8/24	192"
FSS-10/18	180"	FSS-10/24	240"
FSS-12/18	216"	FSS-12/24	288"
FSS-15/18	270"	FSS-15/24	360"
FSS-16/18	288"	FSS-16/24	384"
FSS-20/18	360"	FSS-20/24	480"
FSS-24/18	432"	FSS-24/24	576"



Double Sided Units

ITEM #:	LENGTH:	ITEM #:	LENGTH:
FDS-8/18	72"	FDS-6/24	72"
FDS-10/18	90"	FDS-12/24	144"
FDS-12/18	108"	FDS-18/24	216"
FDS-16/18	144"	FDS-24/24	288"
FDS-20/18	180"	FDS-30/24	360"
FDS-24/18	216"		
FDS-32/18	288"		
FDS-40/18	360"		





● ● ● ● ●
SOUTHWESTSOLUTIONSGROUP

SouthwestSolutions.com | 800-803-1083 | info@southwestsolutions.com