

Mobilize your storage.



● ● ● ● ●
SOUTHWEST **SOLUTIONS** GROUP

What is ActivRAC?

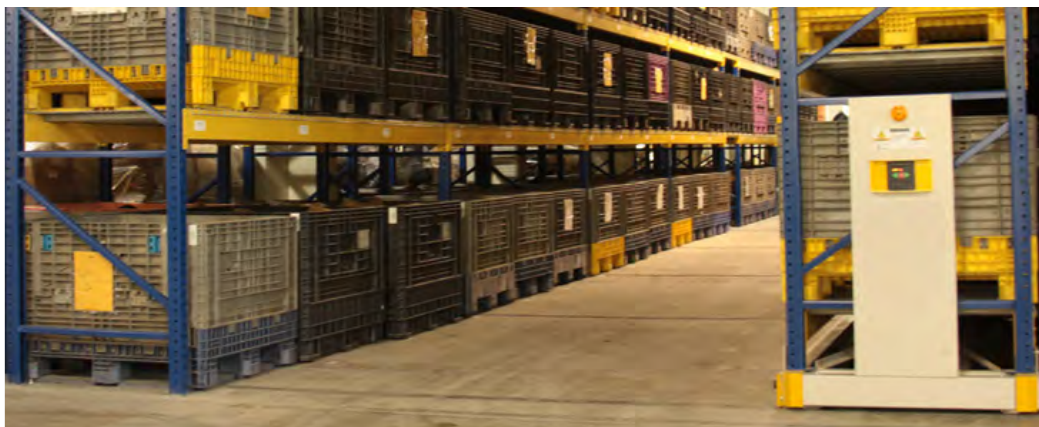


Heavy-Duty Storage in Less Space

You're probably familiar with traditional heavy-duty storage options—static wide span shelving, pallet racking, storage containers, and bins. The challenge with static storage is that it takes up a fixed amount of space, while the number of items you need to store keeps changing.

If you don't have the ability to expand your storage space, there's a good chance it's overcrowded and unorganized, which leads to a whole other set of issues—decreased productivity, low morale, safety hazards for employees, and ultimately, a negative effect on your bottom line.

With options to accommodate 7,000-30,000 pounds per carriage section, ActivRAC® Mobilized Storage System is the perfect heavy-duty storage solution. By mounting new or existing shelving, drawer systems, cantilever shelving, or pallet racking onto ActivRAC rails, shelves can slide side-to-side and static aisles are converted into productive storage space. Easy controls allow full access to every aisle for maximum convenience and safety. It's a simple concept that enables you to store the same amount of items in half the footprint.

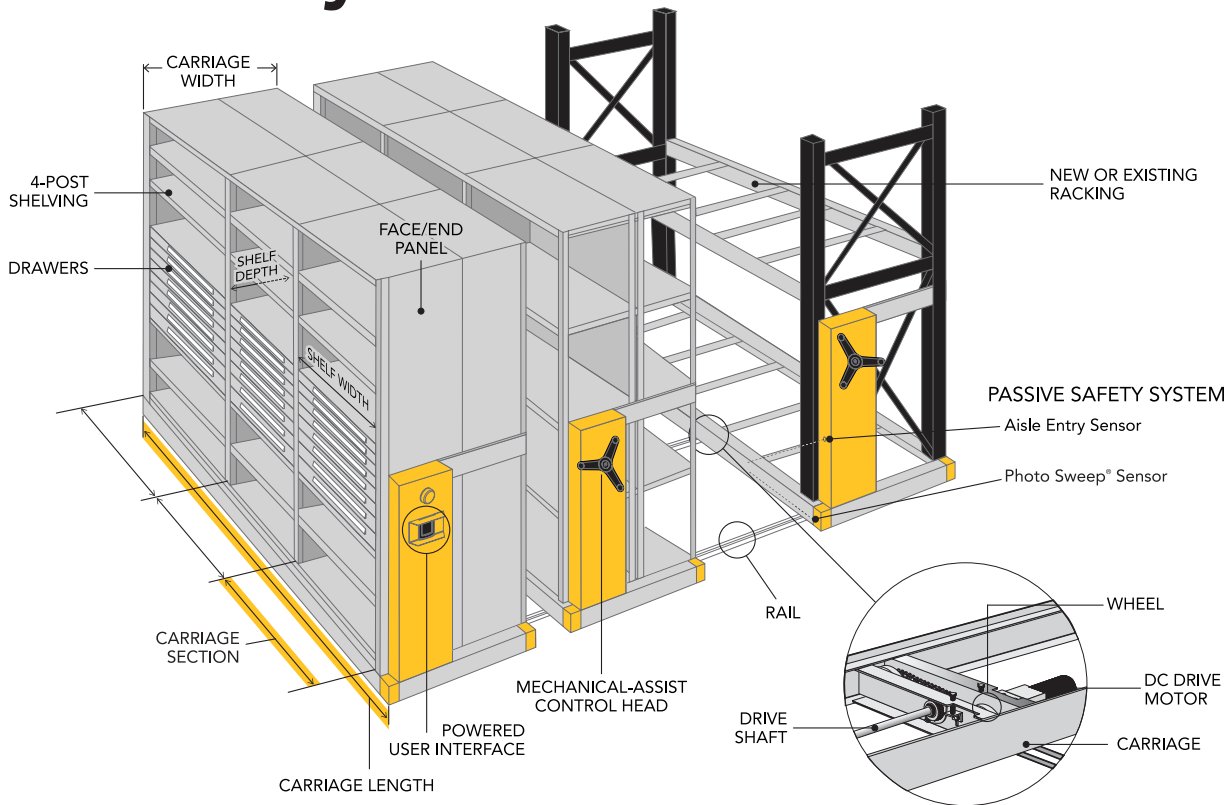


Product Overview



MODEL	ActivRAC 7M/7M-SS/7P	ActivRAC 16P	ActivRAC 30P
DUTY RATING	Light- to Medium-Duty	Medium- to Heavy-Duty	Heavy-Duty
MAX. LOAD CAPACITY* - Single Carriage Section - Back-to-Back Carriage Sections *between the rails	7,000 lbs. (3,175 kg) N/A	16,000 lbs. (7,257 kg) 32,000 lbs. (14,514 kg)	30,000 lbs. (13,607 kg) 60,000 lbs. (27,215 kg)

Anatomy of ActivRAC



Modes of Operation



MECHANICAL-ASSIST CONTROL

Mobile shelving units are moved by simply turning an ergonomically designed, soft-touch, three spoke rotating handle. This handle allows users to move carriage weights of 4,000 to 10,000 lbs. with only one pound of effort. A variety of safety options are available for mechanical assist mobile storage systems.



STANDARD POWERED CONTROL

Powered mobile shelving systems provide immediate access to stored goods. Activate system movement with the push of a button, and then enter aisles as the carriage begins to move open the requested aisle.



TOUCH TECHNOLOGY CONTROL™

With an interactive screen, intuitive menu, and powerful functionality, Touch Technology Control™ offers exceptional convenience and security. Along with powered system movement, the system can be programmed to require a PIN or badge swipe to open and access any aisle.



TUSC® CONTROL APP

Turn your mobile device into a remote control for your powered system with the TUSC® Control App. Open and close aisles from up to 100 feet away, get safety info, and search for stored items with your Android or iOS phone or tablet.

Cold and Sanitary Environments

Stainless Steel Mobile Racking



Clean room and corrosive environments need heavy-duty storage, too—and more often than not, the square footage for these types of spaces comes at a premium. The high operational and energy costs of these buildings make expansion an expensive undertaking—but what other option do you have when you start running out of space for your products and materials?



Maximize your freezer, cooler, or clean room space with stainless steel mobile shelving. ActivRAC 7M (Mechanical-Assist) Stainless Steel Mobile Racking was specifically designed to meet the increasing need for more storage capacity in these types of environments. The stainless steel construction holds up to 7,000 pounds and can withstand cold temperatures, moisture build-up, and harsh cleaning supplies—and at the same time, frees up additional cooler space and eliminates the need for expansion or leasing.

ActivRAC[®] 7M & ActivRAC 7P

MOBILIZED STORAGE SYSTEM

Increase Storage Capacity without a New Building or New Shelving — Sound Too Good to be True?

Don't let inadequate storage ruin your productivity, safety, and bottom line. ActivRAC 7M (mechanical-assist operation) and 7P (powered operation) are built durable enough to handle up to 7,000 pounds for heavy-duty storage needs, but are versatile enough for almost any storage project, from records storage to research labs. ActivRAC maximizes the space you already have by mounting existing shelves onto mobile carriages and eliminating static aisles and shelving.

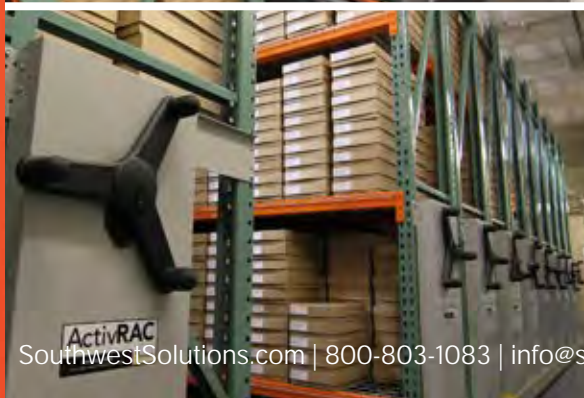
In Use: University of Washington School of Aquatics and Fishery Sciences

The University of Washington not only had to find space to store 1.9 million small fish bones, but they also needed to transfer them between 2 different types of containers during processing – equating to a total of 12,000 boxes that had to be stored on site.

In the past, the Fishery Sciences Department worked with a local Spacesaver representative to find a storage solution to house the school's fish collection. The collection includes 1,400 species of fish, totaling 300,000 adult fish samples in containers and large, custom refrigerated drawers.

This system is still in use over 20 years later and being accessed on a daily basis. Due to this successful, long-lasting installation, the department knew exactly who could help them solve their latest mobile storage challenges.

For the new project, the representative recommended industrial-grade racking mounted on an ActivRAC 7M system to store the massive otolith collection. The ActivRAC 7M rail is anchored into the concrete floor so that no raised flooring or grout was needed to complete the mobile storage installation. **This solution meant lower costs for the University, a more streamlined installation, and easy access for researchers, faculty, and students.**



ActivRAC® 16P

MOBILIZED STORAGE SYSTEM

Storage that Helps Prepare for the Future

Finding a long-term solution for storing heavy items can be overwhelming. Not only do you need more space, you also need to access items efficiently and easily – a task that’s sometimes more difficult than it sounds. ActivRAC 16P helps organizations find smarter ways to streamline their processes and eliminate the need for expansion or off-site leasing. Each mobile carriage holds up to 16,000 pounds to accommodate heavy-duty storage needs in half the space. Just mount new or existing shelving onto the mobile carriages. With the push of a button, the mobile racking storage systems slide apart to eliminate permanent aisles and maximize space.

In Use: Southwest Police Department

A metropolitan police department in the southwest needed an upgrade in its evidence storage processes and storage system. Their old system required officers to create handwritten tags to process each item separately. With an overcrowded evidence room and no barcode technology, it became almost impossible to locate items needed for cases or disposal.

By installing an ActivRAC 16P heavy duty mobile storage system, the department cut down on evidence processing and tracking time by more than 80%. This efficiency increase represents the hours worked by 7 full-time employees.

Smaller pieces of evidence are stored with a Spacesaver Eclipse powered mobile shelving system, which features keypad entry to ensure that the chain of custody is maintained at all times. By incorporating the mobile storage system with RFID technology, the police department streamlined daily tasks while preparing for future needs.



Safety Features

AISLE-ENTRY SENSOR FOR POWERED OPERATIONS

Powered mobile shelving systems provide immediate access to stored goods. To open an aisle, simply use the Mobile Control app or press the button by hand to activate system movement, and then enter aisles as the carriage begins to move open the requested aisle.



PHOTO SWEEP® SENSOR FOR POWERED OPERATIONS

An infrared light beam, unaffected by sunlight or ambient light extremes, projected the length of the carriage at its base stops system movement when broken by a person’s foot or other object.

Options: Widespan Shelving

RaptorRAC™
WIDESPAN SHELIVING

SHELIVING BUILT TO LAST, WITH INFINITE POSSIBILITIES

Rugged and versatile, Spacesaver's RaptorRAC™ wide span shelving provides the perfect platform for storing a variety of heavy and bulky items.



Designed to work in static applications as well as seamlessly integrate with Spacesaver's wide range of industry-leading mobile systems, RaptorRAC's wide range of standard and configured sizes make it possible to build a custom shelving system for your needs.

ActivRAC® 30P
MOBILIZED STORAGE SYSTEM

Sometimes, Traditional Heavy-Duty Shelving just Isn't Enough

The ActivRAC 30P is a powered system that allows the movement of 30,000 pounds per carriage section with the push of a button. In addition to the traditional powered system, there are also options for a touch pad control, which offers a way to access specific aisles and PIN-code access with audit capabilities.

In Use: Fort Carson Military Base

At Army base Fort Carson in Colorado, the Supply Support Activity Unit (SSA) was struggling. Their military warehouse storage was critical to the success of the unit's ability to deploy efficiently, but their processes were anything but. The SSA is responsible for supply in support of LRC distribution, storage, and maintenance missions, but their cargo containers resided outside the building.

The 50-yard walk soldiers were doing several times a day to load and unload materials into the Bill of Material (BOM) containers was wasting a significant amount of time, and the SSA knew they needed to remedy the issue. But they were skeptical—how were they going

to consolidate all of the heavy materials into one location and cut down on wasted trips out to the cargo containers?

With an ActivRAC 30P heavy-duty mobile storage system, multiple soldiers are now able to work in the area simultaneously, allowing them to load and unload all of the heavy materials. When work in the warehouse is done for the day, aisles can be secured with a touchpad audit system and Rollok doors, eliminating access and safety concerns. With durable rails that accommodate up to 30,000 pounds and aisles that open with the touch of a button or remote control, ActivRAC 30P is ready to tackle your toughest storage challenges.





Transforming Usable Space & Capability

Remote Access for High Density Storage

Control your powered mobile systems from your iOS or Android smartphone or tablet. The TUSC® Control app turns your smartphone or tablet into a remote control for your powered mobile storage systems. You can open and close aisles, enter and search for items and see your system's safety status.

In Use: Improving Efficiency in a Cold Storage Warehouse

The Abnormal Beer Company has built a reputation around creative collaboration and new approaches to complex challenges. The business began as a small winery and is now a 10-barrel brew house with 440 barrels of fermentation capacity. The warehouse, which includes a 15,000-cubic-foot cold box, is a key component of the company's growth strategy. Optimizing space in the cold box has allowed the company to operate more efficiently and rent cold storage space to other breweries.

After installing Spacesaver's bluetooth-enabled app to open the aisles from a distance, they saw efficiency improvements right away. "Being able to be on the forklift and hop between aisles, utilizing my phone, made a big difference," the Warehouse Manager said.

"When I'm pulling out of my first aisle row, and I know that I need something from the second row, as I'm pulling it out of the cold box I can tell it to start moving. And while I'm loading our truck, the whole system's already moving, so when I come back in I'm already on the row, ready to go."

– Warehouse Manager

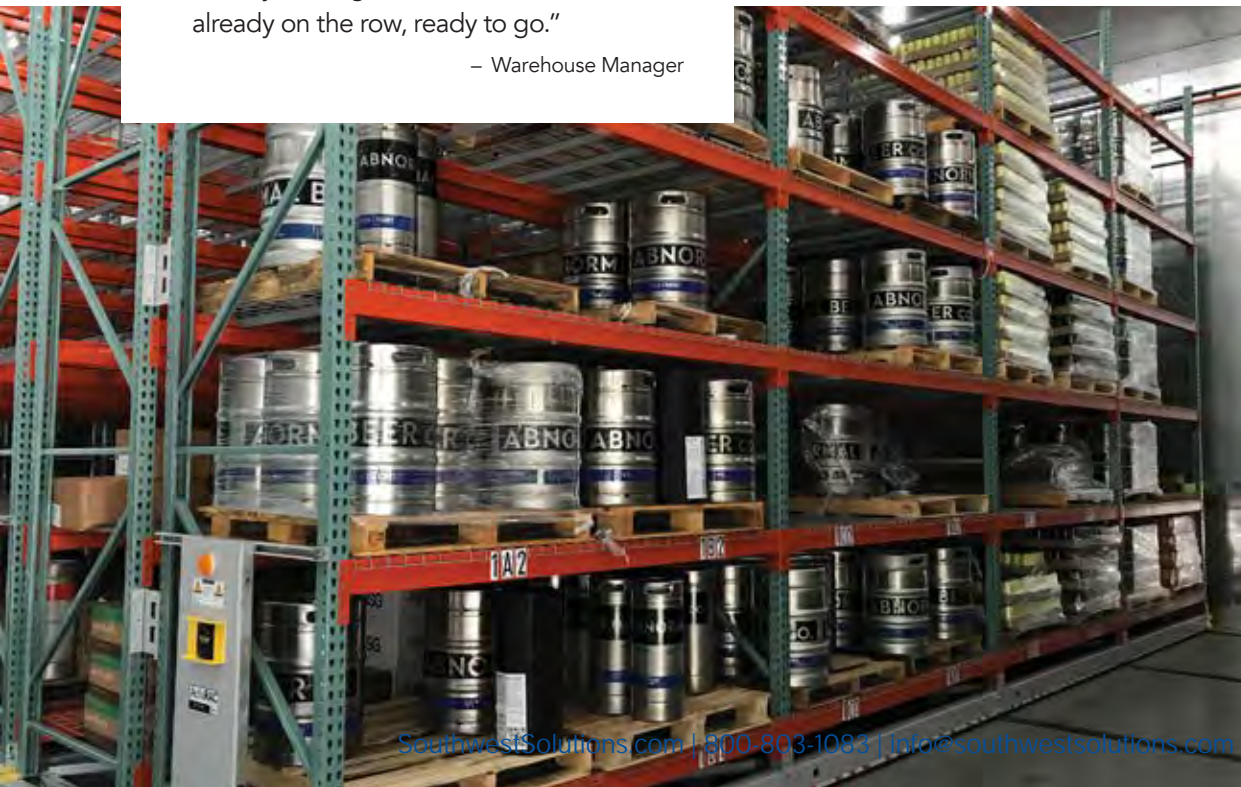


TUSC®
CONTROL APP



APP FEATURES:

- App can be installed on phones or tablets with either iOS or Android operating systems
- Open and close aisles from up to 100 feet away
- Automatically displays the number of carriages and open aisle(s)
- Simple color coded system status to display safety information
- Ability to reset locked aisles for access
- Option to lock out system movement by other users when app is in use
- Item Locator:
 - » The item listing is a simple searchable text listing of items that are stored on the left and right side of each aisle.
 - » Item list files can be shared with other users of the TUSC® Control app



ActivRAC® Mobilized Storage systems allow you to store more in less space, free up value-generating space and better organize material use. Systems are rated to handle different load capacities and offer robust features.



DUTY RATING	Light- to Medium-Duty	Light- to Medium-Duty	Light- to Medium-Duty	Medium- to Heavy-Duty	Heavy-Duty
MAX. LOAD CAPACITY* - Single Carriage Section - Back-to-Back Carriage Section *between the rails	7,000 lbs. (3,175 kg) N/A	7,000 lbs. (3,175 kg) N/A	7,000 lbs. (3,175 kg) N/A	16,000 lbs. (7,257 kg) 32,000 lbs. (14,514 kg)	30,000 lbs. (13,607 kg) 60,000 lbs. (27,215 kg)
STORAGE SYSTEM	Pallet racking, shelving	Pallet racking, shelving	Pallet racking, shelving	Pallet racking, shelving	Pallet racking, shelving
OPERATION	Mechanical-Assist	Mechanical-Assist	Electric -Powered	Electric -Powered	Electric-Powered
CONTROLS (Standard)	Three-spoked handle with rotating knob	Three-spoked handle with rotating knob	Standard Powered, Touch Technology Control™, TUSC® Control App	Standard Powered, Touch Technology Control™, TUSC® Control App	Standard Powered, Touch Technology Control™, TUSC® Control App
MATERIAL CONSTRUCTION	Steel	Stainless Steel	Steel	Steel	Steel
DRIVE SYSTEM	Chain & Sprocket drive	Chain & Sprocket drive	1/8 HP; 90-volt DC Synchronized Motors	1/4 HP; 90-volt DC Synchronized Motors	1/4 HP; 90-volt DC Synchronized Motors
RAIL DESIGN OPTIONS	Surface Mount or Recessed	Surface Mount or Recessed	Surface Mount or Recessed	Surface Mount or Recessed	Recessed with Structural Reinforcement
SAFETY (Standard)	Safety Lock Anti-Drift Mechanism	Safety Lock Anti-Drift Mechanism	PhotoSweep® Aisle Entry Sensor Beacon & Horn	PhotoSweep® Aisle Entry Sensor Beacon & Horn	PhotoSweep® Aisle Entry Sensor Beacon & Horn
SECURITY (Optional)	Carriage Lock	Carriage Lock	Keypad	Keypad	Keypad
OPTIONAL	<ul style="list-style-type: none"> Multiple Gear Ratios • Power Override Unit - Infrared Remote - Radio Frequency Remote - Computer Interface - 	<ul style="list-style-type: none"> • - - - - 	<ul style="list-style-type: none"> - • • • • 	<ul style="list-style-type: none"> - • • • • 	<ul style="list-style-type: none"> - • • • •
NEW STANDARD FEATURES					
TUSC® Platform	-	-	•	•	•
Programmable Aisles	-	-	•	•	•
TEMPERATURE CRITERIA					
Above 32° F (0° C)	•	•	• ** +	• ** +	• ** +
Below 32° (0° C) to -20° F (-28.88° C)	•	•	• ** +	• ** +	• ** +

• Controlled humidity **No frost or condensation on the system +Consult Factory

CUSTOM ENGINEERED OPTIONS AVAILABLE UPON REQUEST

