

# LIBRARY TRANSFORMATIONS

FROM CONCEPT TO COMPLETION



# LET THE TRANSFORMATION BEGIN



● ● ● ● ●  
SOUTHWESTSOLUTIONSGROUP

[SouthwestSolutions.com](http://SouthwestSolutions.com) | 800-803-1083 | [info@southwestsolutions.com](mailto:info@southwestsolutions.com)

A library is a place for people to transform themselves and their community. It's a place where an entrepreneur can take an idea from a dream to a business plan, where groups can host lively discussions, and where students can find a cozy spot to study over a cup of coffee. Perhaps most importantly, it's a place where patrons can find help in making sense of the vast amount of information that's available in our modern world.

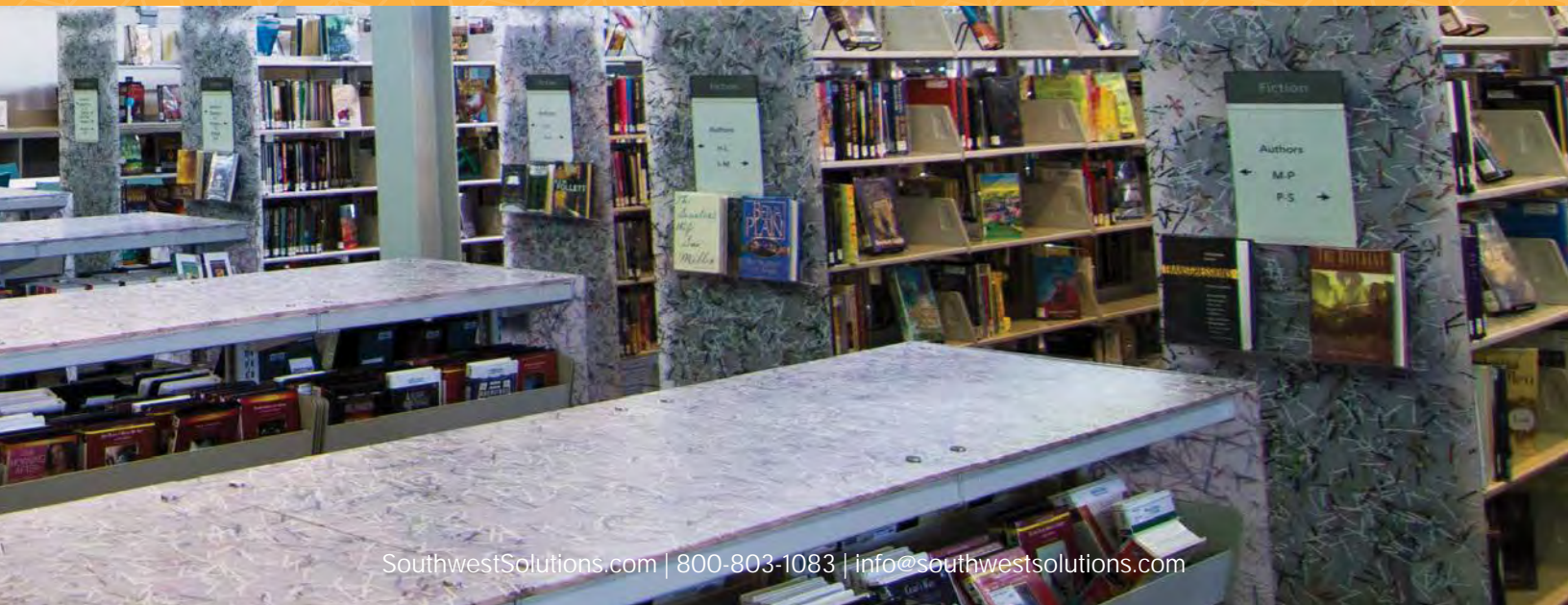
Once in a great while, a library itself is transformed. Renovating, expanding, or building a library is an exciting and vitally important task, but it can also be a daunting one. It doesn't have to be: While this might be the first time your community or university has undertaken such an effort, the Spacesaver team has spent more than 40 years perfecting the art of space transformation in libraries and other work environments. Our extensive network of local distributors, backed up by the strength of our engineering and manufacturing teams, are here to help at every step along the way. We look forward to working with you to design a storage solution that supports your vision and fulfills your library's mission.

# LIBRARIES ARE EVOLVING.

As libraries change to meet the needs of their communities, staff face the challenge of finding space for modern uses while still accommodating ever-growing collections of books and other materials. We offer a variety of storage solutions to help libraries free up space for modern uses, including meeting rooms, computer workstations, cafes, and other spaces for patrons to learn and interact.



# NEW POSSIBILITIES



At the interior designer's request, Spacesaver's engineers created this soaring installation to visually connect the children's area with large windows on the second floor. The installation is not intended to dispense books but rather to create an artistic display from books that are not part of the library's collection.

Galleries  
Art Installations  
Artifacts



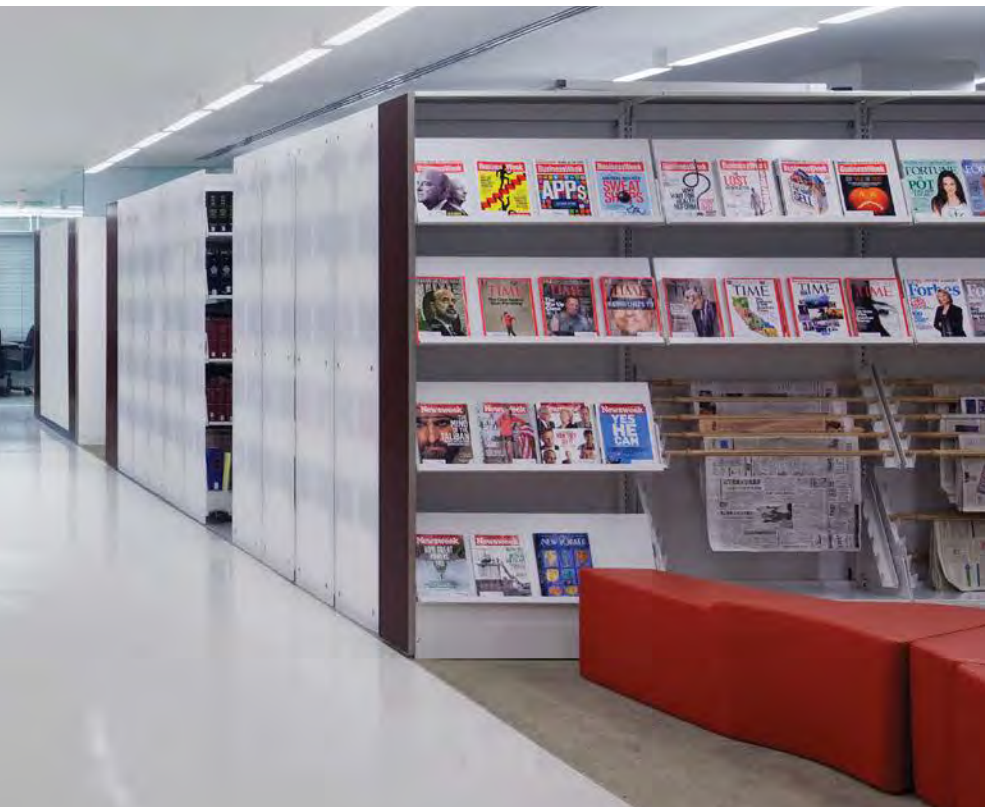
## SHOWCASE & DISPLAY

### COMMUNITY USES:

Geographic Displays  
Retail Material  
Historic Timelines

A shop operated by the library friends group at the Seattle Central Library closes compactly after hours, freeing up space in the atrium area for evening events and providing a secure way to store the shop's contents.





Outward-facing shelves or browsing bins encourage patrons to linger and engage with materials, and custom end panels integrate seamlessly with the building's interior design.

### ACADEMIC USES:

Historic Documents  
Special Collections  
Periodicals



## COLLECTIONS CARE



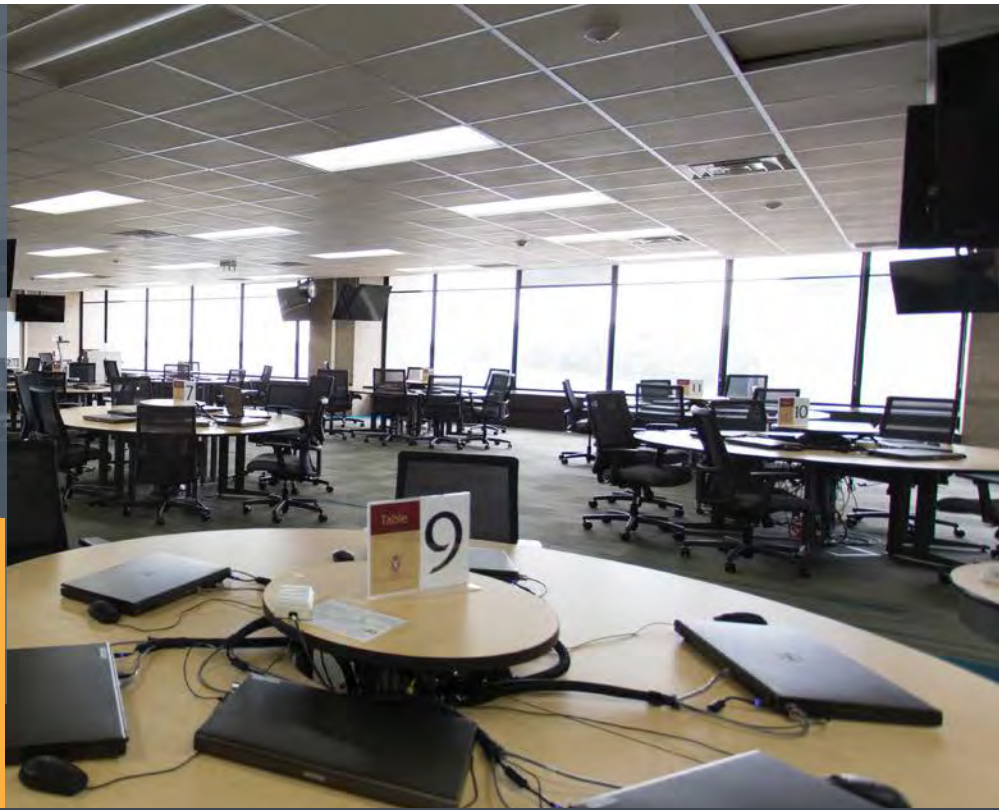
Genealogical Records  
Books & Rare Books  
Monographs

Perforated shelving, sometimes installed in conjunction with perforated end panels, helps maintain ideal conditions to preserve rare books and other historic documents.

The University of Wisconsin Madison moved seldom-accessed volumes to Spacesaver high-bay shelving. This freed up valuable on-campus space for new learning environments.

## ACADEMIC USES:

Workstations  
Makerspaces  
Production Studios



# TECHNOLOGY ACCESS

Public Access WiFi  
Makerspaces  
Software Training

Libraries help bridge the "digital divide" by providing high-speed internet access to patrons who would otherwise be cut off from online learning opportunities.







Placing books and other materials on high-density compact shelving can open up space for meeting areas, classrooms, cafes, and other uses.

### ACADEMIC USES:

Group Study  
Conversation Areas  
Classrooms



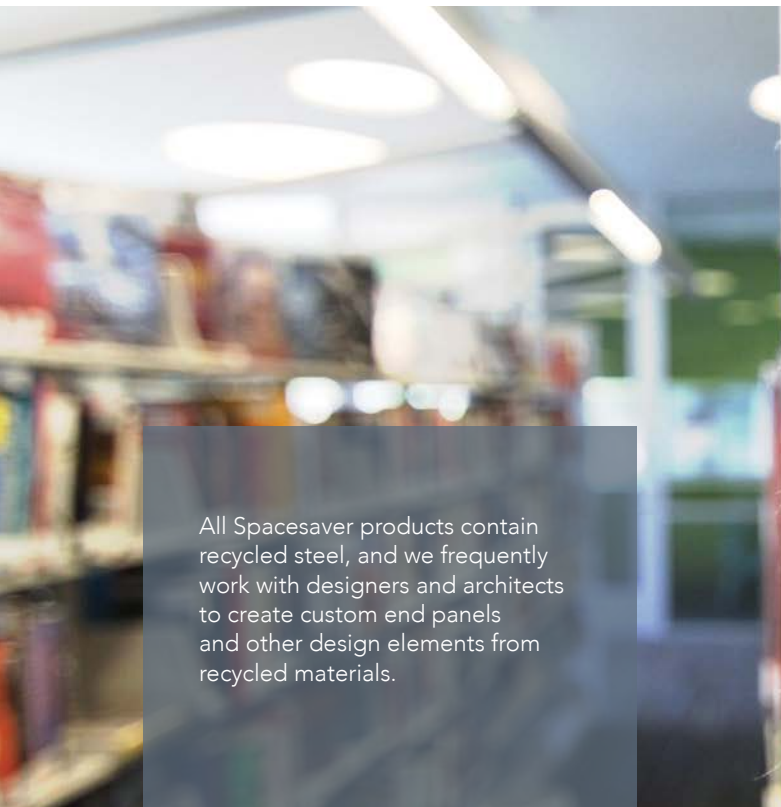
## MEETING SPACES



### COMMUNITY USES:

Event Spaces  
Cafes & Coffee Shops  
Retail or Gift Stores

Cafes encourage patrons to linger at the library, and they also provide an additional revenue stream. Some cafes double as meeting areas for book clubs and study groups.



All Spacesaver products contain recycled steel, and we frequently work with designers and architects to create custom end panels and other design elements from recycled materials.



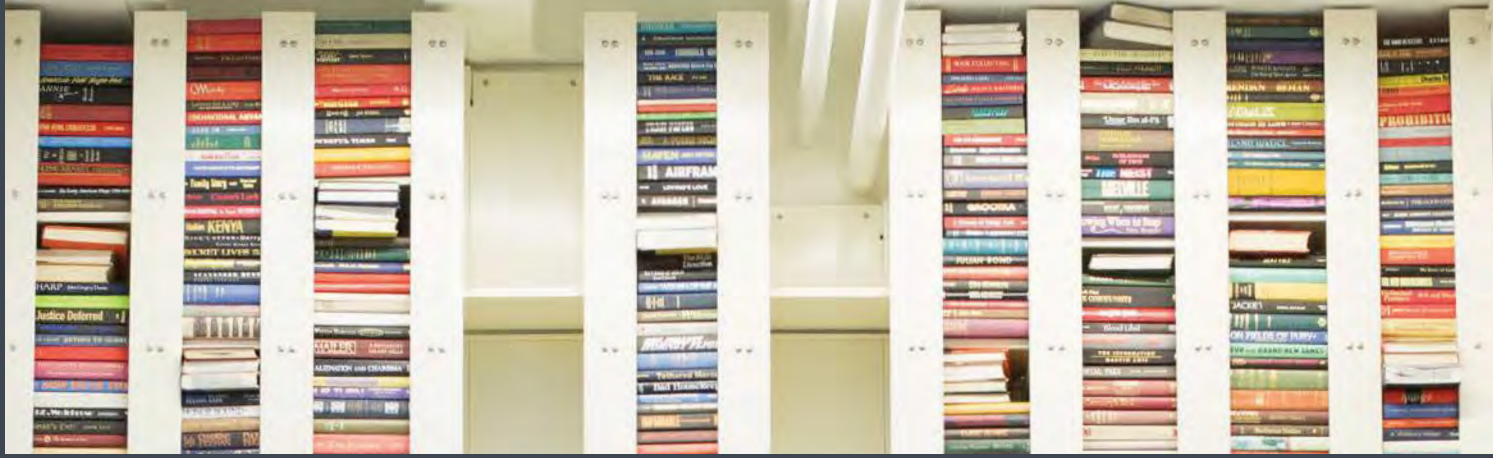
## COMPLIANCE & SUSTAINABILITY

### ACADEMIC & COMMUNITY USES:

- ADA Code Compliance
- Durability
- Recycled Materials
- Seismic Regulations
- Fire Code Compliance

Not only are our storage systems compliant with ADA requirements, fire codes, seismic regulations, and other directives, but our local storage consultants can help ensure that clients' installations comply with applicable laws.





Our only limitation is our imagination.



# REPURPOSE TO REVIVE.

In providing space for collaborative areas, modern libraries are often faced with a challenge—how to make room for more of the services required by today's patrons. Whether you're building new or rethinking an existing space, our storage systems can help create new areas to serve your community's changing needs.



# THOUGHTFUL REVIVAL



# AESTHETICS

---

End panels, lighting, and other custom solutions reinforce the themes of a building's interior design, transforming shelving units into design elements in their own right. Architects and designers appreciate the fact that Spacesaver is a corporation large enough to provide industry-leading storage systems and yet agile enough to engineer and manufacture custom solutions for any project, large or small. We've proven time and again that storage systems can integrate beautifully with a building's interior design.

# INVITING SPACES





LED lighting was installed on cantilever shelving units throughout many areas of the St. Louis Central Library. These fixtures not only attract the eye but are also used to illuminate the aisles, resulting in an energy efficient and more cost-effective solution.

## ST. LOUIS CENTRAL LIBRARY

The iconic, Italian-Renaissance-inspired St. Louis Central Library was designed by Cass Gilbert, one of the most famous architects of the early 20th century. The Carnegie-funded building has been visited by millions of people from all over the world, but after a century of constant use, the structure's historic majesty could not make up for its lack of modern amenities.

The renovation project involved a variety of solutions to create a safer building, free up square footage for collaborative spaces, and conserve the library's woodwork and other historic features while modernizing its appearance and functionality. The Central Library re-opened during the St. Louis Public Library's centennial year of service, and the library is now a blend of old and new, where ornate wooden ceilings and dramatic chandeliers meet high-tech computer labs, sleek glass walls and exposed concrete floors.

The high-density mobile storage systems used throughout the library helped open up existing spaces for new functions, including a café, classrooms and meeting spaces, along with a teen room, which incorporates study areas, lounge seating, and a small theater-like TV viewing area. The library also added a full-size auditorium for community events.

◀ Red acrylic end panels were used on cantilever shelving units in the showcase space on the main level of the library, which is called The Center for the Reader. These pieces were custom ordered and then mounted to Spacesaver shelving during installation.

# COMPACT MOBILE

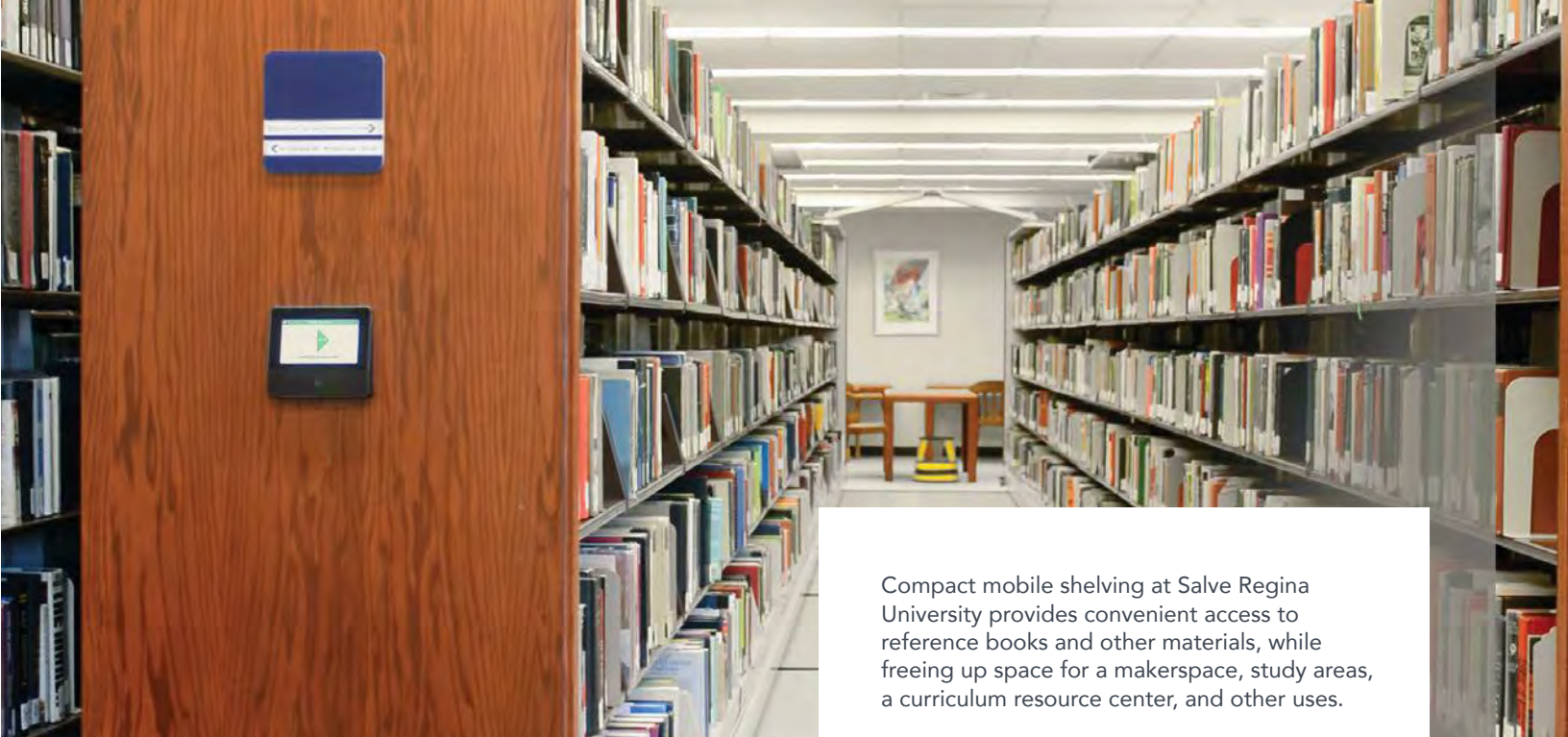
---

By eliminating fixed aisles and creating movable aisles, compact mobile storage systems increase storage capacity, improve efficiency, and consolidate collections. Existing library shelving units can be mounted on mobile carriage-and-rail systems to convert stationary storage into compact storage, saving money and space.

# CONSOLIDATION & ACCESSIBILITY







Compact mobile shelving at Salve Regina University provides convenient access to reference books and other materials, while freeing up space for a makerspace, study areas, a curriculum resource center, and other uses.

## SALVE REGINA UNIVERSITY

The need for collaborative workspaces has created demand for more open and flexible areas in libraries of all sizes. The library professionals at McKillop Library at Salve Regina University wanted to maintain the library's traditional stacks, but they also wanted to embrace new ways for patrons to interact with the collection and use the library space—and they wanted to avoid new construction.

They began planning a repurposing project by designating areas for quiet study and collaborative work areas, as well as rooms for academic services and tutoring. In order to maintain convenient access to the stacks, they consolidated the library's book collection on a compact shelving system, which consists of traditional library shelving mounted on 22 carriages. The system allows the shelving units to move along rails installed in the floor, eliminating wasted aisle space and allowing staff and patrons use electronic control panels to easily open an aisle when and where it's needed.

Consolidating and compacting these materials freed up a variety of areas for collaborative work, including a makerspace and informal meeting areas. Large tables and whiteboards are now located throughout the library for students to use, allowing students to work on projects in a group setting, and a new curriculum resource center has given students a place to go for help with their work outside of the classroom.

### ST. LOUIS CENTRAL PUBLIC LIBRARY SYSTEM

- ◀ Compact shelving units can be operated with mechanical-assist controls, pictured at left, or by electronic control, pictured above. Both methods are ADA-compliant, safe, and reliable, providing decades of trouble-free operation.

# CANTILEVER & OPTIONS

---

With hundreds of design and shelving arrangement options, heavy-duty construction, and the ability to expand and reconfigure storage, cantilever shelving offers flexibility for collection storage and display. Choose from shelf options like browsing boxes, book supports, tiered media displays, and more, and switch out accessories as the library's needs change. New or existing cantilever shelving can be mounted onto a compact mobile storage system to provide even more storage capacity and allow for future growth.

# BETTER BROWSING





Cantilever shelving includes traditional library shelving as well as a variety of modern options, such as pull-out browsing boxes, that offer a convenient way to display and store materials. Canopy lighting, custom end panels, casters, and other options allow shelving and displays to integrate with a library's interior design.

## ANACOSTIA PUBLIC LIBRARY

Anacostia Public Library was selected to be rebuilt as part of a district-wide library revitalization effort. As is the case with many modern libraries, the community needed space not only for book storage but also for meetings, adult learning, conferences, socializing, and computing.

The design team selected Spacesaver cantilever shelving as its storage solution because the product allowed the team to both customize and standardize. The stacks were designed to feature a translucent resin product in the end panels, which incorporated recycled papers as a design element and enabled additional daylight to flow through the space. Careful thought was put into the selection of the shelving paint color so that all libraries in the District of Columbia could be standardized on the product going forward.

The District of Columbia Public Library has projected all new libraries be built to a LEED® Silver standard, meaning that the interior furnishings and finishes had to contribute to this sustainable design goal. The local Spacesaver affiliate, as well as Spacesaver's engineering team, contributed to this LEED® library design.

### GLENDALE BRANCH SALT LAKE CITY LIBRARY

- ◀ Cantilever shelving units on casters provide an innovative and flexible way to store and display books at this library in Utah. All our steel products contain recycled material, and we frequently work with designers and architects to create custom end panels and other design elements from recycled materials.

# RECONFIGURABLE DISPLAYS

---

Flexible features allow staff to create custom spaces on the fly. From A-frame shelving to wheeled carts and shelving units, we offer products to create configurable storage spaces that also serve as attractive displays.

# FLEXIBILITY



## MARMALADE BRANCH SALT LAKE CITY LIBRARY

Casters installed on small shelving units in a children's area allow staff to reconfigure the space as needed for class sessions and other special events. Custom end panels integrate with the library's interior design.

# OFF-SITE SHELVING

---

Off-site storage creates a way for libraries to compactly store seldom-accessed materials while still keeping those materials available to patrons. High-bay shelving systems, designed specifically for storage in climate-controlled warehouses, provide optimal space efficiency, accessibility, and protection for stored books and other items. As with Spacesaver's standard library shelving, the shelving heights in our high-bay shelving units can be adjusted based on book or box height, eliminating wasted space between the shelves and making full use of the facility's vertical space.

# ARCHIVAL



## WESTERN MICHIGAN UNIVERSITY

High-bay storage in off-site facilities is an increasingly popular way for libraries to preserve collections while making space for other uses in public areas of the library. This cost-effective solution allows for quick retrieval and an improved workflow.

# CREATING A PARTNERSHIP.

It takes a team to successfully build, renovate, or expand a library. Because a well-designed storage system forms the core of an effective facility, we've found that storage is often one of the primary considerations as the planning process begins. Our local distributors routinely collaborate with library professionals and the architects, contractors, and interior designers on their teams, working in partnership to create practical and aesthetically pleasing storage solutions.



# BECOMING A REALITY



# SPACE ASSESSMENT

Our extensive network of authorized distributors specializes in understanding the unique needs of libraries. Not only are our consultants trained in making the best use of any available space, they're also experts in ADA requirements, HVAC systems, fire codes, seismic regulations, and other directives.

Contacting Spacesaver to arrange a free, no-obligation space assessment is the first step toward reimagining your space creating a facility that better serves your community, your staff, and your institution's collection.





# DESIGN ASSISTANCE

---

To ensure that your project is done right, your Spacesaver design consultant is available to assist you at every step along the way, from discussing concepts in the pre-design phase all the way through to final design, installation, and maintenance. He or she will gain a thorough understanding of your library's needs and serve as a liaison between end users and the architects, designers, and contractors working on your project—as well as with our engineering team and manufacturing facility in Wisconsin, USA. Our commitment to customer service ensures a truly integrated and effective storage solution.

“A library is not a luxury but one of the necessities of life.”

-Henry Ward Beecher

# PROJECT FUNDING

---

As you consider project funding, keep in mind that contracts offer a powerful purchasing option. Contracts are systems set up by state governments and other organizations to evaluate products and negotiate pricing with esteemed vendors—a process that in turn allows government, education, non-profit organizations, and other groups to save time and money when purchasing those vendors' products. Libraries in the U.S. and Canada can purchase Spacesaver products at a deep discount by using Sourcewell (formally known as NJPA), National IPA, and/or state contracts.



“Intelligence is the ability to adapt to change.”

- Stephen Hawking



SOUTHWEST SOLUTIONS GROUP

SouthwestSolutions.com | 800-803-1083 | info@southwestsolutions.com