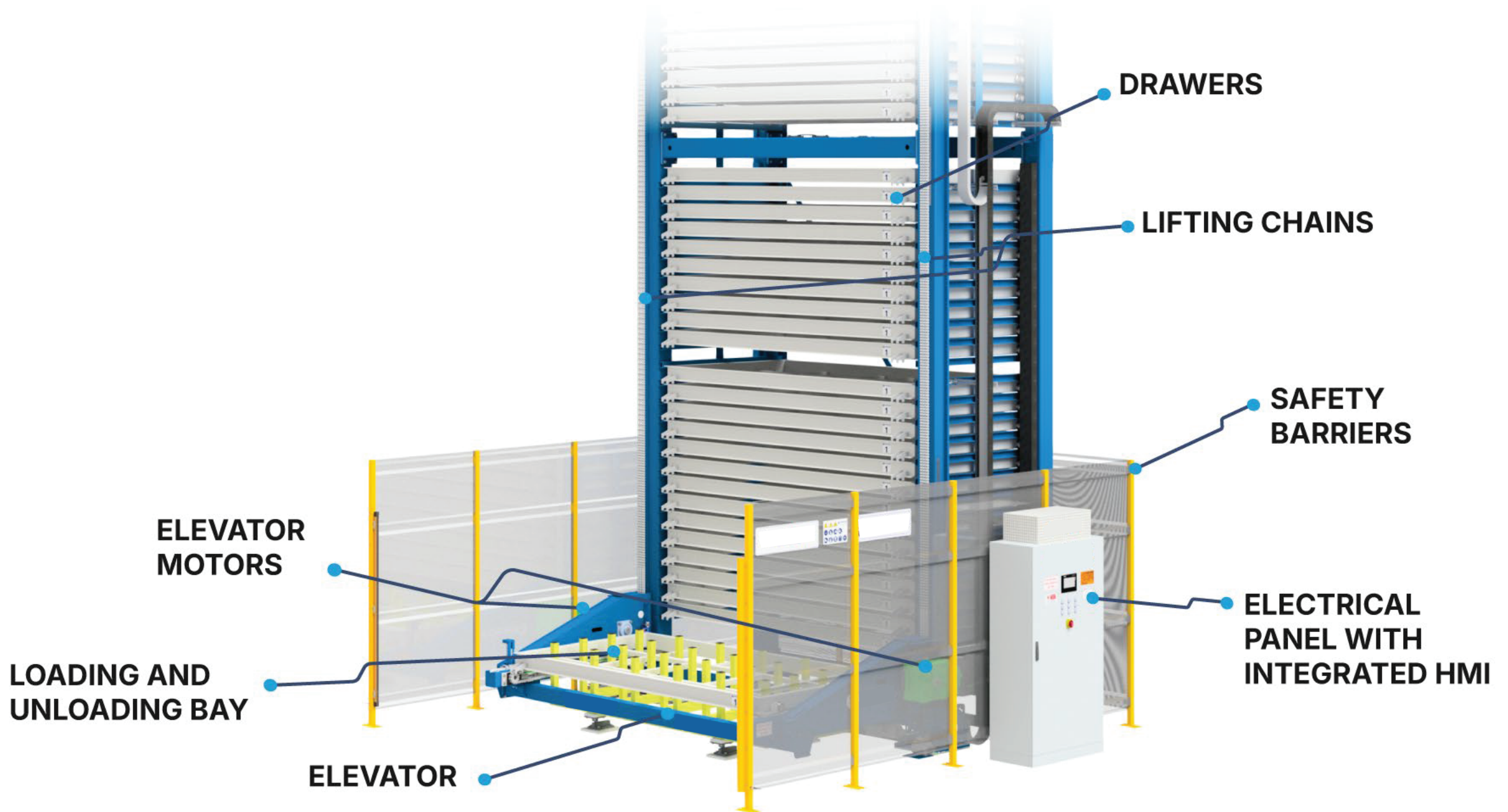





Automatic Storage Systems for Bars, Tubes and Profiles

SSG's automated storage systems organizes and optimizes the storage of sheet metal and long material vertically, reducing floor space, and material handling in complete safety.







BARS, TUBES & PROFILES MODELS





Drawers lenght	da 3000 mm a 12000 mm (from 10 ft to 40 ft)
Drawers width	da 400 mm a 2000 mm (from 1.3 ft to 6.5 ft)
Loading height	da 250 mm a 1000 mm (from 0.8 ft to 3.3 ft)
Load capacity	1500 – 3000 - 5000 kg each drawer (3,300 – 6,600 – 11,000 lbs each drawer)



BARs, TUBES & PROFILES CONFIGURATIONS



Single Tower with front load and unload

Double Tower front load and unload with movable shuttle





Double Tower
Front and back load
and unload with movable
shuttle

Double Tower Side loading and unloading with movable shuttle





Multi-Towers (4,6,8 towers)
Front and back load and
unload with common
shuttle

DRAWER TYPES



Drawers:

1. Closed bottom and sides (for shorter bars and cut outs)
2. Open bottom and closed sides (full length bars and tubes)
3. Fully open with perimeter pins (accessible with forklifts and suitable for bundles of profiles and tubes)

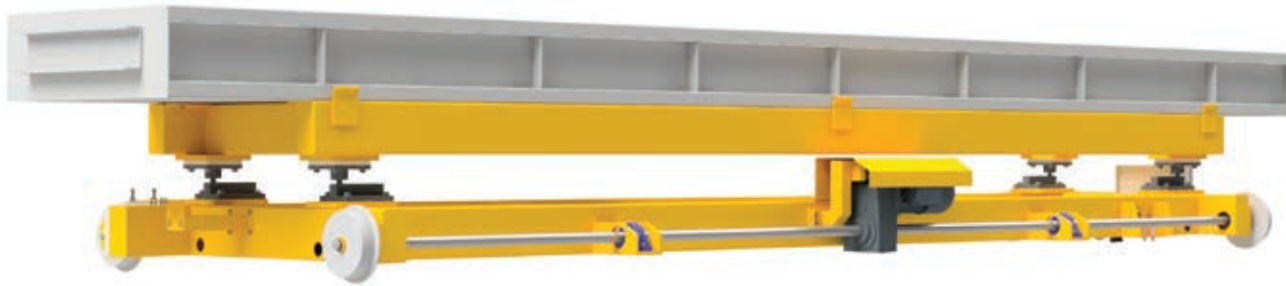




Double tower with fully open tray and perimeter removable pins (accessible with forklifts and suitable for tubes and profiles full bundles)



BARS LOADING AND UNLOADING CONFIGURATIONS



Loading and unloading
bay with movable
shuttle for bars, tubes,
and profiles





STORAGE SYSTEM DIMENSIONS AND LOADS



12 m (40 ft)

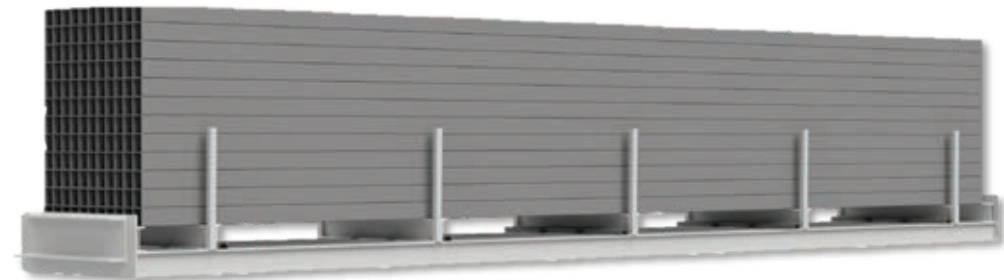
Single tower, sheet
metal, tubes & bars
maximum height: 12 m
(40 ft)



Double tower, sheet
metal, tubes & bars
maximum height : 16 m
(52 ft)

Maximum Drawer Load Capacity:

1. Bars | 5000 kg
(11,000 lbs)
2. Bundles | 5000 kg
(11,000 lbs)





INDOOR AND OUTDOOR VERSIONS



Indoor version

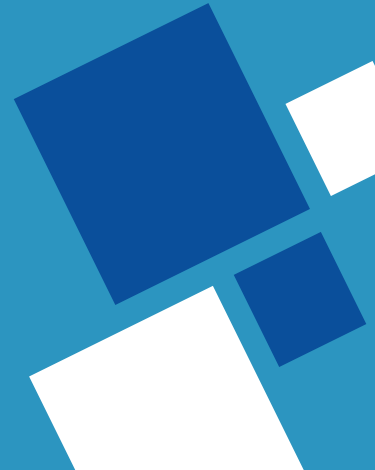


Outdoor version with
custom integrated
enclosure and wall
pass-through shuttle
for indoor load and
unload





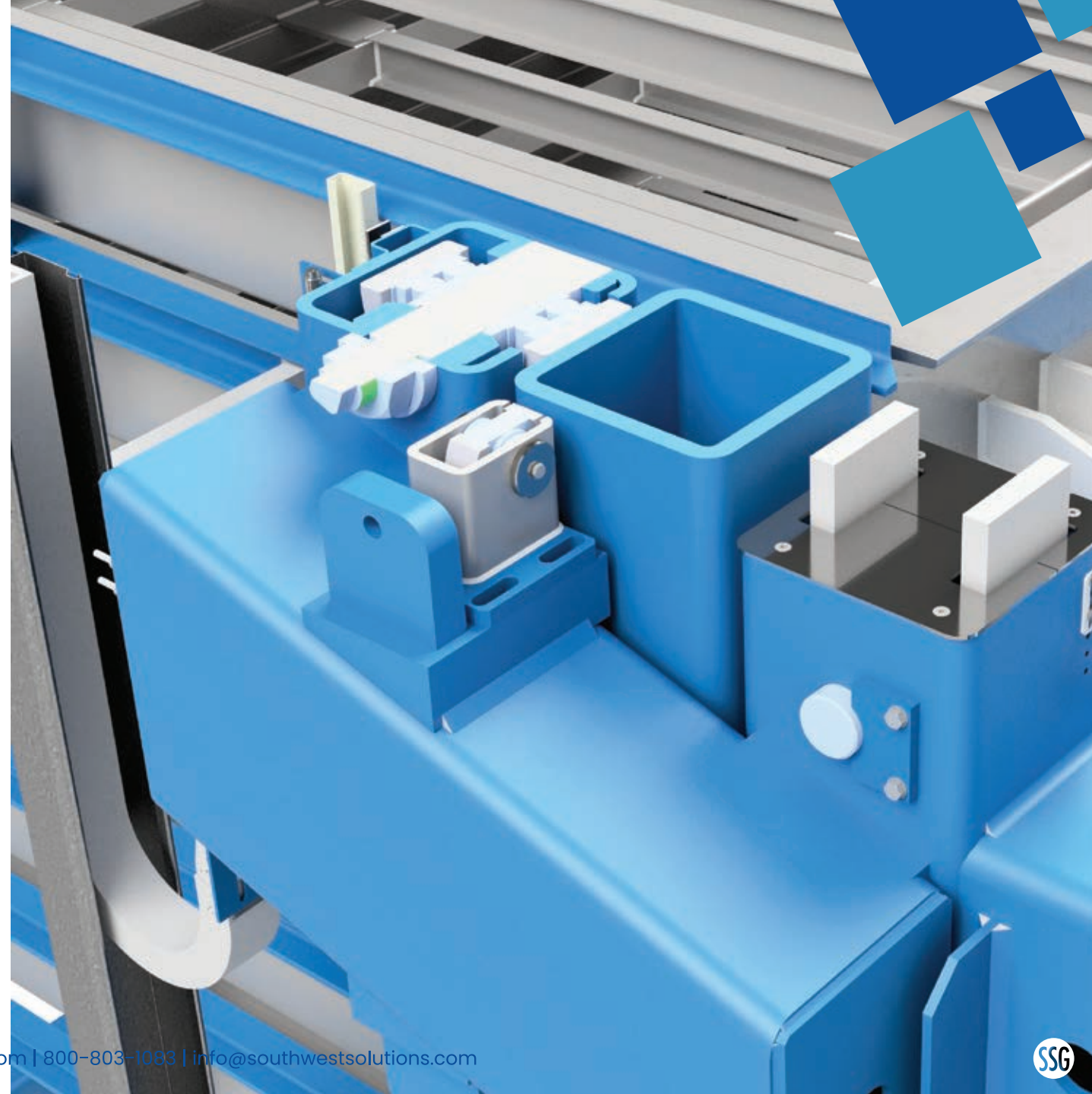
MECHANICAL AND CONSTRUCTION FEATURES



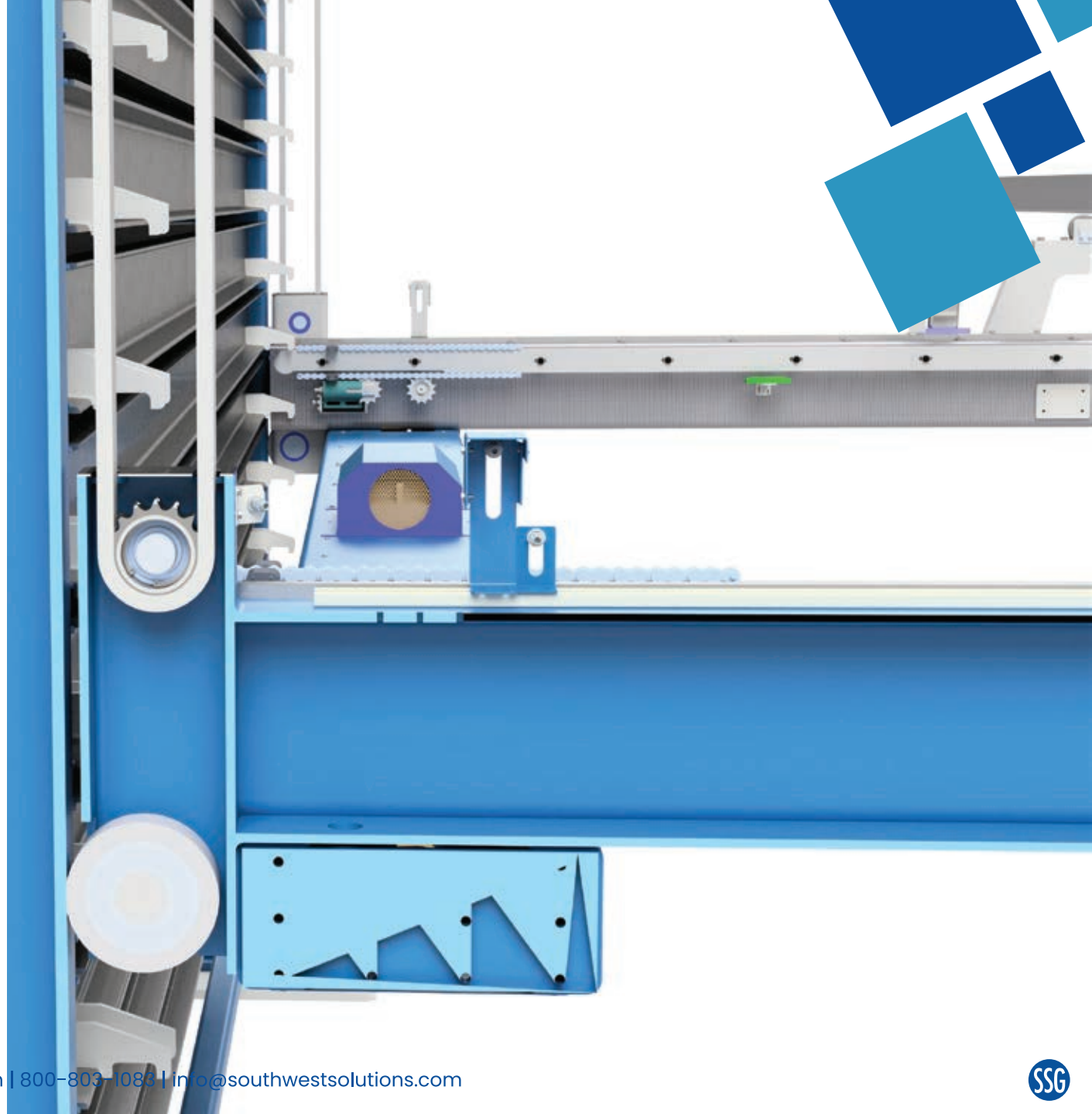
Dual motor lift for speed and precision




Tower construction
Heavy duty 16 mm
(0.63 in) thick tubulars
for reliability and
durability of the system

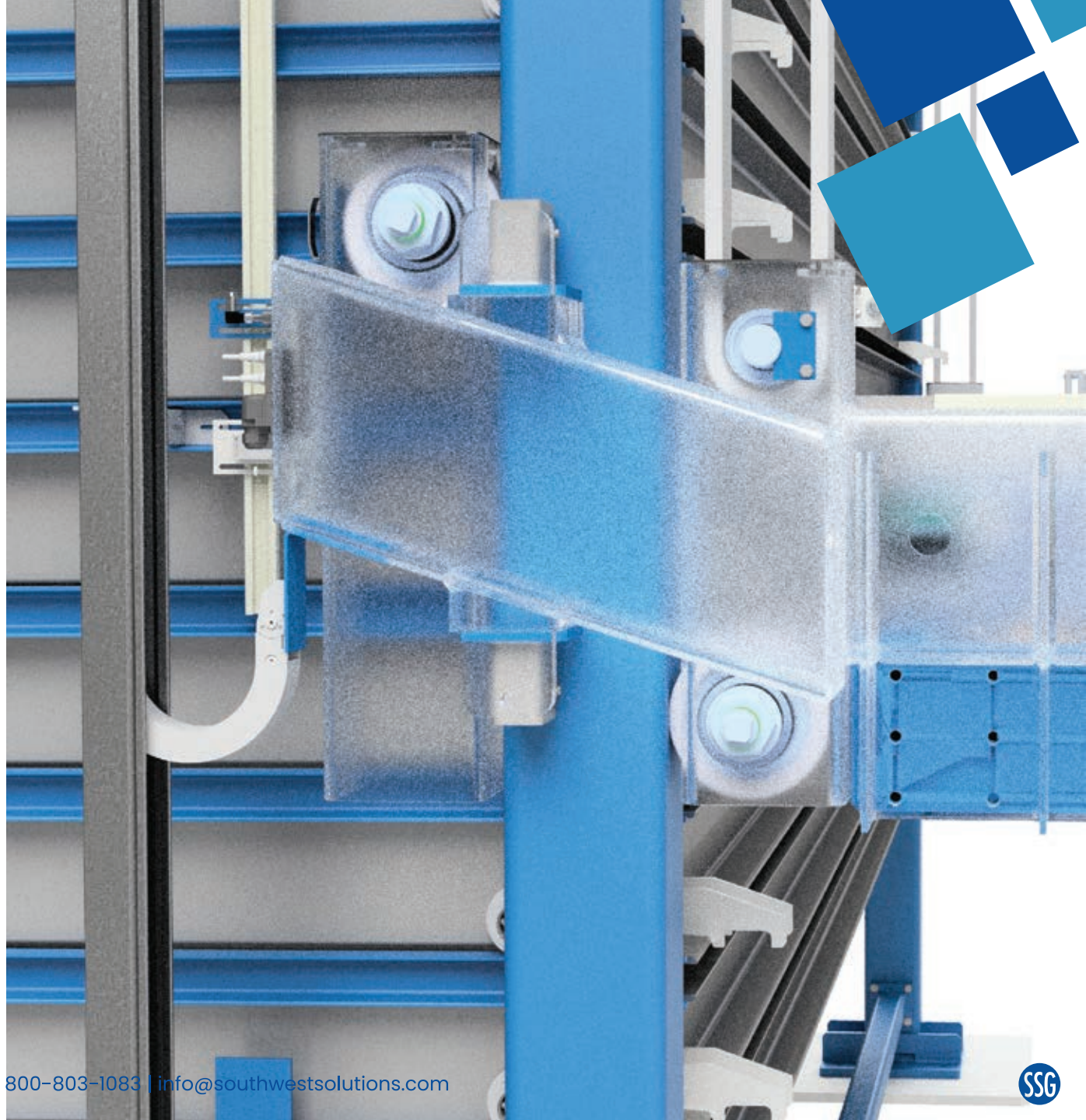


Arm construction
Heavy duty 12 mm (0.5 in)
thick tubulars for reliability
and durability of the
system





Sliding wheels
Heavy-duty 200 mm (7,9
in) diameter for greater
rigidity and structural
strength



SHUTTLE GUIDES



Underground shuttle
guides



Surface shuttle
guides

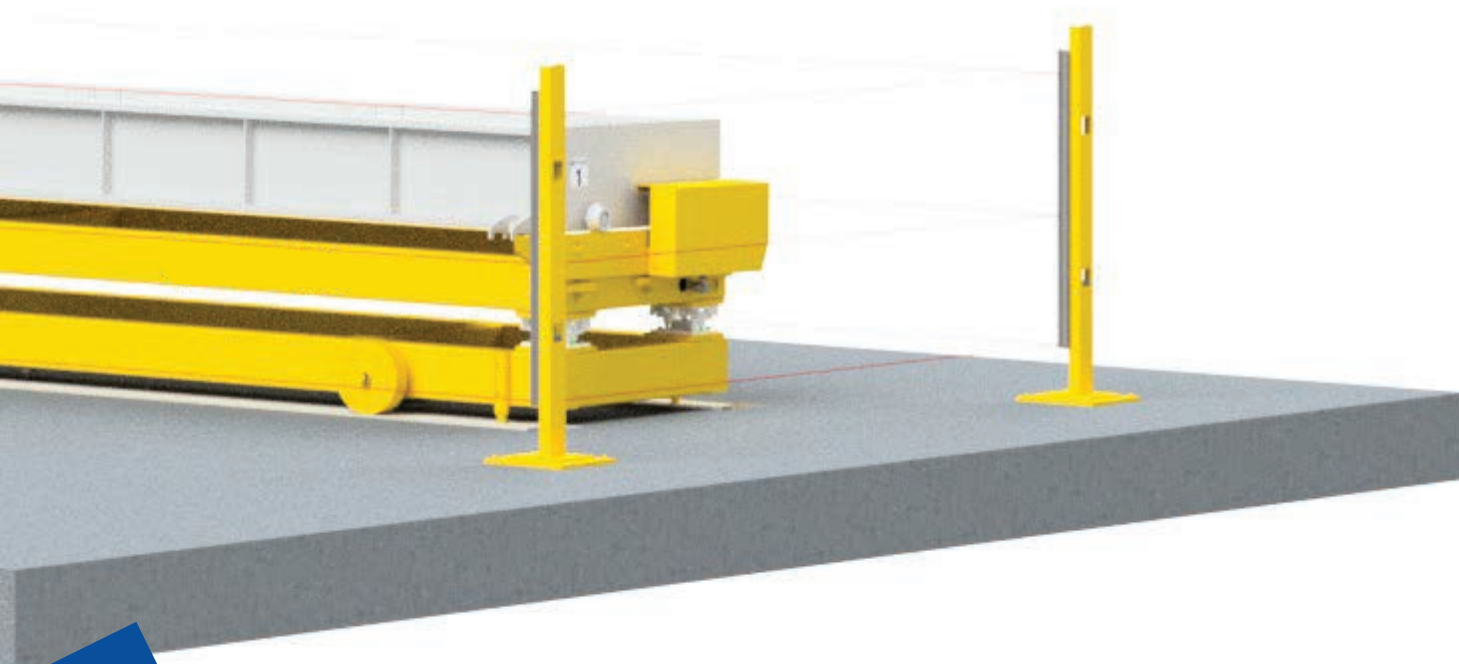
SAFETY FEATURES & ACCESSORIES



SAFETY

Physical perimeter
protections (safety
guards)





SAFETY

Optical perimeter
protections
(photoelectric barriers
or laser scanners)

SAFETY

3 configurations of safety optical barriers:

1. Single tower with perimetral barriers to prevent incidents with elevator.
2. Double tower with shuttle, mounting shortened safety guards and light curtains configured with manual shuttle exit trough dead man button.
3. Double tower with shuttle, mounting extended safety guards and light curtains configured with automated shuttle exit.

SENSORS

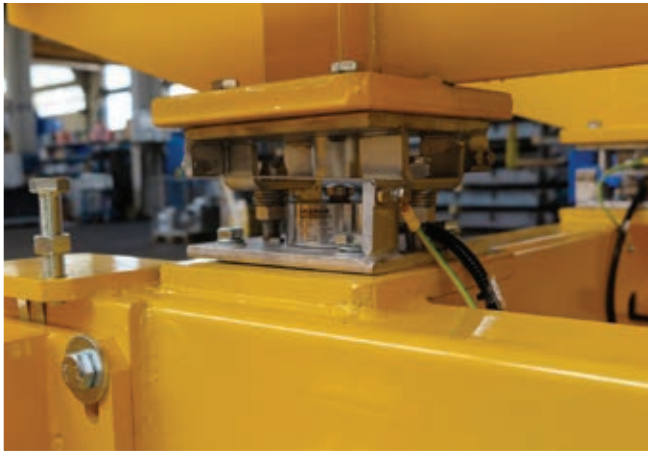


Wire encoder for
maximum precision



Drawer leveling and
alignment sensors

ACCESSORIES

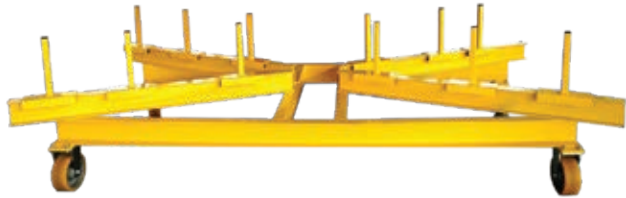


Load cells to monitor the maximum weight allowed inside the drawer



Barcode Reader

ACCESSORIES



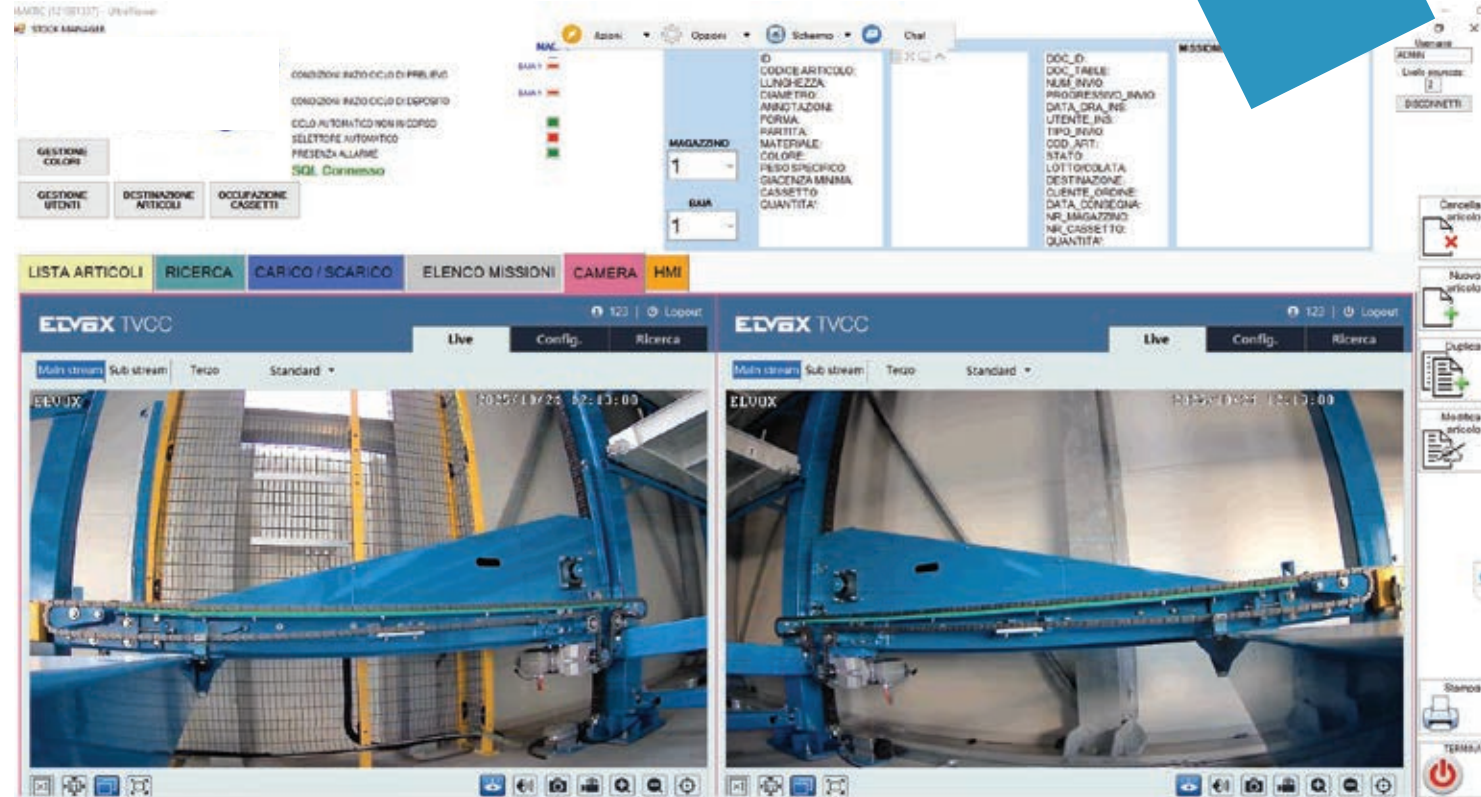
Depalletizer for sheet metal



HMI touch screen and 21" screen for warehouse WMS software

ACCESSORIES

WMS software
to manage and organize
material quantities and
types





THANKS FOR YOUR
ATTENTION